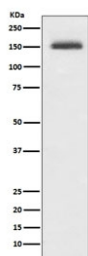


## ITGA4 Antibody / Integrin alpha 4 [clone IHH-9] (RQ5406)

Catalog No.	Formulation	Size
RQ5406	Antibody in PBS with 0.02% sodium azide, 50% glycerol and 0.4-0.5mg/ml BSA	100 ul

[Bulk quote request](#)

Availability	1-2 weeks
Species Reactivity	Human
Format	Purified
Host	Rabbit
Clonality	Rabbit Monoclonal
Isotype	Rabbit IgG
Clone Name	IHH-9
Purity	Affinity purified
UniProt	P13612
Applications	Western Blot : 1:500-1:2000
Limitations	This ITGA4 antibody is available for research use only.



Western blot testing of human Jurkat cell lysate with ITGA4 antibody. Predicted molecular weight ~115 kDa, routinely observed at ~150 kDa.

### Description

The ITGA4 gene encodes a member of the integrin alpha chain family of proteins. Integrins are heterodimeric integral membrane proteins composed of an alpha chain and a beta chain that function in cell surface adhesion and signaling. The encoded preproprotein is proteolytically processed to generate light and heavy chains that comprise the alpha 4 subunit. This subunit associates with a beta 1 or beta 7 subunit to form an integrin that may play a role in cell motility and migration. This integrin is a therapeutic target for the treatment of multiple sclerosis, Crohn's disease and inflammatory bowel disease. Alternative splicing results in multiple transcript variants. [RefSeq]

## **Application Notes**

Optimal dilution of the ITGA4 antibody should be determined by the researcher.

## **Immunogen**

A synthetic peptide specific to human Integrin alpha 4 / ITGA4 was used as the immunogen for the ITGA4 antibody.

## **Storage**

Store the ITGA4 antibody at -20oC.