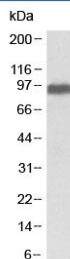


## ITCH Antibody (R33805)

Catalog No.	Formulation	Size
R33805-100UG	0.5 mg/ml in 1X TBS, pH7.3, with 0.5% BSA (US sourced) and 0.02% sodium azide	100 ug

[Bulk quote request](#)

Availability	1-3 business days
Species Reactivity	Human
Predicted Reactivity	Mouse, Rat, Dog
Format	Antigen affinity purified
Host	Goat
Clonality	Polyclonal (goat origin)
Isotype	Goat Ig
Purity	Antigen affinity
Gene ID	83737
Applications	Western Blot : 0.1-0.3ug/ml ELISA (peptide) LOD : 1:16000
Limitations	This ITCH antibody is available for research use only.



Western blot testing of human brain (frontal cortex) lysate with ITCH antibody at 0.1ug/ml. Predicted molecular weight: ~99 kDa.

## Description

Additional name(s) for this target protein: Itchy homolog E3 ubiquitin protein ligase; AIF4

## Application Notes

Optimal dilution of the ITCH antibody should be determined by the researcher.

## **Immunogen**

Amino acids EIKSHDLKPNGGN were used as the immunogen for this ITCH antibody.

## **Storage**

Aliquot and store the ITCH antibody at -20oC.