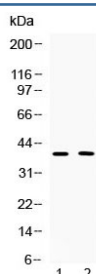


ISL1 Antibody / Islet 1 (R32744)

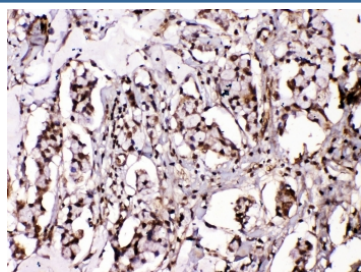
Catalog No.	Formulation	Size
R32744	0.5mg/ml if reconstituted with 0.2ml sterile DI water	100 ug

Bulk quote request

Availability	1-3 business days
Species Reactivity	Human, Rat
Format	Antigen affinity purified
Host	Rabbit
Clonality	Polyclonal (rabbit origin)
Isotype	Rabbit IgG
Purity	Antigen affinity
Buffer	Lyophilized from 1X PBS with 2.5% BSA, 0.025% sodium azide
UniProt	P61371
Localization	Cytoplasmic, nuclear
Applications	Western Blot : 0.5-1ug/ml Immunohistochemistry (FFPE) : 1-2ug/ml
Limitations	This ISL1 antibody is available for research use only.



Western blot testing of 1) rat PC12 and 2) human MCF7 lysate with ISL1 antibody at 0.5ug/ml. Predicted molecular weight ~39 kDa.



IHC testing of FFPE human breast cancer tissue with ISL1 antibody at 1ug/ml. Required HIER: steam section in pH6 citrate buffer for 20 min and allow to cool prior to testing.

Description

Insulin gene enhancer protein ISL-1 is a protein that in humans is encoded by the *isl1* gene. This gene encodes a member of the LIM/homeodomain family of transcription factors. The encoded protein binds to the enhancer region of the insulin gene, among others, and may play an important role in regulating insulin gene expression. The encoded protein is central to the development of pancreatic cell lineages and may also be required for motor neuron generation. Mutations in this gene have been associated with maturity-onset diabetes of the young.

Application Notes

Optimal dilution of the ISL1 antibody should be determined by the researcher.

Immunogen

Amino acids 118-161 (DEFALREDGLFCRADHDVVERASLGAGDPLSPLHPARPLQMAAE) from the human protein were used as the immunogen for the ISL1 antibody.

Storage

After reconstitution, the ISL1 antibody can be stored for up to one month at 4°C. For long-term, aliquot and store at -20°C. Avoid repeated freezing and thawing.