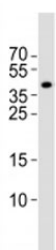


## Isl1 Antibody / Islet 1 (F52956)

Catalog No.	Formulation	Size
F52956-0.4ML	In 1X PBS, pH 7.4, with 0.09% sodium azide	0.4 ml
F52956-0.08ML	In 1X PBS, pH 7.4, with 0.09% sodium azide	0.08 ml

[Bulk quote request](#)

<b>Availability</b>	1-3 business days
<b>Species Reactivity</b>	Rat
<b>Predicted Reactivity</b>	Human, Chicken, Zebrafish
<b>Format</b>	Antigen affinity purified
<b>Host</b>	Rabbit
<b>Clonality</b>	Polyclonal (rabbit origin)
<b>Isotype</b>	Rabbit Ig
<b>Purity</b>	Antigen affinity
<b>UniProt</b>	P61372
<b>Applications</b>	Western Blot : 1:1000
<b>Limitations</b>	This Isl1 antibody is available for research use only.



Western blot analysis of lysate from rat brain tissue lysate using Isl1 antibody at 1:1000.  
Predicted molecular weight ~39 kDa.

## Description

Binds and regulates the promoters of the insulin, glucagon and somatostatin genes. Involved in the specification of motor neurons in cooperation with LHX3 and LDB1.

## Application Notes

Titration of the Isl1 antibody may be required due to differences in protocols and secondary/substrate sensitivity.

## Immunogen

This mouse Isl1 antibody was produced from a rabbit immunized with a KLH conjugated synthetic peptide between 302-336 amino acids from the C-terminal region of mouse Isl1.

## Storage

Aliquot the Isl1 antibody and store frozen at -20oC or colder. Avoid repeated freeze-thaw cycles.