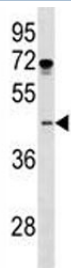


ISL1 Antibody / Islet 1 (F44709)

Catalog No.	Formulation	Size
F44709-0.4ML	In 1X PBS, pH 7.4, with 0.09% sodium azide	0.4 ml
F44709-0.08ML	In 1X PBS, pH 7.4, with 0.09% sodium azide	0.08 ml

Bulk quote request

Availability	1-3 business days
Species Reactivity	Human, Mouse
Predicted Reactivity	Chicken, Rat, Zebrafish
Format	Antigen affinity purified
Clonality	Polyclonal (rabbit origin)
Isotype	Rabbit Ig
Purity	Antigen affinity
UniProt	P61371
Applications	Western Blot : 1:1000
Limitations	This ISL1 antibody is available for research use only.



ISL1 antibody western blot analysis in MDA-MB231 lysate. Predicted molecular weight ~39 kDa.



ISL1 antibody western blot analysis in mouse bladder tissue lysate. Predicted molecular weight ~39 kDa.

Description

ISL1 is a member of the LIM/homeodomain family of transcription factors. The encoded protein binds to the enhancer region of the insulin gene, among others, and may play an important role in regulating insulin gene expression. The encoded protein is central to the development of pancreatic cell lineages and may also be required for motor neuron generation. Mutations in this gene have been associated with maturity-onset diabetes of the young.

Application Notes

Titration of the ISL1 antibody may be required due to differences in protocols and secondary/substrate sensitivity.

Immunogen

A portion of amino acids 156-185 from the human protein was used as the immunogen for this ISL1 antibody.

Storage

Aliquot the ISL1 antibody and store frozen at -20oC or colder. Avoid repeated freeze-thaw cycles.