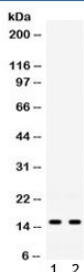


Isg15 Antibody (R32374)

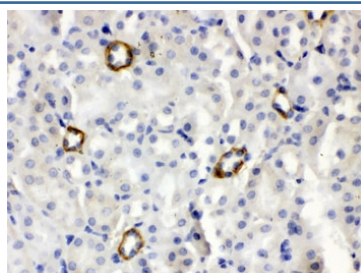
Catalog No.	Formulation	Size
R32374	0.5mg/ml if reconstituted with 0.2ml sterile DI water	100 ug

Bulk quote request

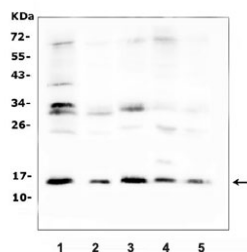
Availability	1-3 business days
Species Reactivity	Mouse
Format	Antigen affinity purified
Clonality	Polyclonal (rabbit origin)
Isotype	Rabbit IgG
Purity	Antigen affinity
Buffer	Lyophilized from 1X PBS with 2.5% BSA and 0.025% sodium azide
UniProt	Q64339
Localization	Cytoplasmic
Applications	Western Blot : 0.1-0.5ug/ml IHC (FFPE) : 0.5-1ug/ml
Limitations	This Isg15 antibody is available for research use only.



Western blot testing of mouse 1) intestine and 2) spleen lysate with Isg15 antibody.
Expected molecular weight: 15-17 kDa.



IHC testing of FFPE mouse kidney with Isg15 antibody. HIER: Boil the paraffin sections in pH 6, 10mM citrate buffer for 20 minutes and allow to cool prior to testing.



Western blot testing of mouse 1) spleen, 2) heart, 3) lung, 4) liver and 5) kidney tissue lysate with Isg15 antibody. Expected molecular weight: 15-17 kDa.

Description

Interferon-stimulated gene 15 (ISG15) is a 17 kDa secreted protein that in humans is encoded by the ISG15 gene. The protein encoded by this gene is a ubiquitin-like protein that is conjugated to intracellular target proteins upon activation by interferon-alpha and interferon-beta. Several functions have been ascribed to the encoded protein, including chemotactic activity towards neutrophils, direction of ligated target proteins to intermediate filaments, cell-to-cell signaling, and antiviral activity during viral infections. While conjugates of this protein have been found to be noncovalently attached to intermediate filaments, this protein is sometimes secreted.

Application Notes

Optimal dilution of the Isg15 antibody should be determined by the researcher.

Immunogen

Amino acids A2-G155 from the mouse protein were used as the immunogen for the Isg15 antibody.

Storage

After reconstitution, the Isg15 antibody can be stored for up to one month at 4°C. For long-term, aliquot and store at -20°C. Avoid repeated freezing and thawing.