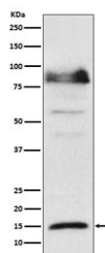


ISG15 Antibody [clone ADOH-9] (RQ5108)

Catalog No.	Formulation	Size
RQ5108	Antibody in PBS with 0.02% sodium azide, 50% glycerol and 0.4-0.5mg/ml BSA	100 ul

[Bulk quote request](#)

Availability	1-2 weeks
Species Reactivity	Human
Format	Purified
Clonality	Rabbit Monoclonal
Isotype	Rabbit IgG
Clone Name	ADOH-9
Purity	Affinity purified
UniProt	P05161
Applications	Western Blot : 1:500-1:2000
Limitations	This ISG15 antibody is available for research use only.



Western blot testing of lysate from HeLa cells treated with IFN alpha, with ISG15 antibody. Expected molecular weight: 15-17 kDa.

Description

Ubiquitin-like protein which plays a key role in the innate immune response to viral infection either via its conjugation to a target protein (ISGylation) or via its action as a free or unconjugated protein. [UniProt]

Application Notes

Optimal dilution of the ISG15 antibody should be determined by the researcher.

Immunogen

A synthetic peptide specific to human ISG15 was used as the immunogen for the ISG15 antibody.

Storage

Store the ISG15 antibody at -20oC.