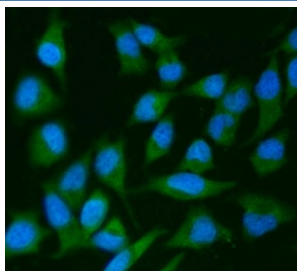


## IRS2 Antibody / Insulin receptor substrate 2 (RQ7181)

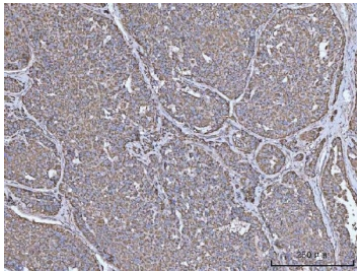
Catalog No.	Formulation	Size
RQ7181	0.5mg/ml if reconstituted with 0.2ml sterile DI water	100 ug

**Bulk quote request**

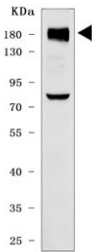
<b>Availability</b>	1-3 business days
<b>Species Reactivity</b>	Human
<b>Format</b>	Antigen affinity purified
<b>Host</b>	Rabbit
<b>Clonality</b>	Polyclonal (rabbit origin)
<b>Isotype</b>	Rabbit IgG
<b>Purity</b>	Antigen affinity purified
<b>Buffer</b>	Lyophilized from 1X PBS with 2% Trehalose
<b>UniProt</b>	Q9Y4H2
<b>Localization</b>	Cytoplasmic
<b>Applications</b>	Western Blot : 0.5-1ug/ml Immunohistochemistry (FFPE) : 2-5ug/ml Immunofluorescence : 5ug/ml Flow Cytometry : 1-3ug/million cells Direct ELISA : 0.1-0.5ug/ml
<b>Limitations</b>	This IRS2 antibody is available for research use only.



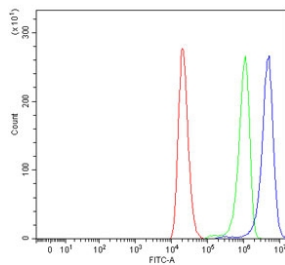
Immunofluorescent staining of FFPE human HeLa cells with IRS2 antibody (green) and DAPI nuclear stain (blue). HIER: steam section in pH6 citrate buffer for 20 min.



IHC staining of FFPE human liver cancer tissue with IRS2 antibody. HIER: boil tissue sections in pH8 EDTA for 20 min and allow to cool before testing.



Western blot testing of human HeLa cell lysate with IRS2 antibody. Predicted molecular weight ~137 kDa but it may be observed at up to ~190 kDa due to phosphorylation.



Flow cytometry testing of human 293T cells with IRS2 antibody at 1ug/million cells (blocked with goat sera); Red=cells alone, Green=isotype control, Blue= IRS2 antibody.

## Description

Insulin receptor substrate 2 (IRS2) is a protein that in humans is encoded by the IRS2 gene. It is mapped to 13q34. This gene encodes the insulin receptor substrate 2, a cytoplasmic signaling molecule that mediates effects of insulin, insulin-like growth factor 1, and other cytokines by acting as a molecular adaptor between diverse receptor tyrosine kinases and downstream effectors. The product of this gene is phosphorylated by the insulin receptor tyrosine kinase upon receptor stimulation, as well as by an interleukin 4 receptor-associated kinase in response to IL4 treatment. IRS2 is expressed in many cells, it may be essential for signaling by several receptor systems.

## Application Notes

Optimal dilution of the IRS2 antibody should be determined by the researcher.

## Immunogen

Recombinant human protein (amino acids E538-E1338) was used as the immunogen for the IRS2 antibody.

## Storage

After reconstitution, the IRS2 antibody can be stored for up to one month at 4oC. For long-term, aliquot and store at -20oC. Avoid repeated freezing and thawing.

