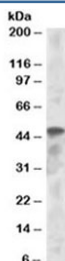


IRF8 Antibody (R35441)

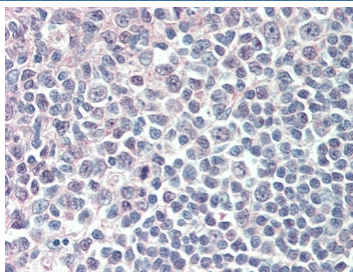
Catalog No.	Formulation	Size
R35441-100UG	0.5 mg/ml in 1X TBS, pH7.3, with 0.5% BSA (US sourced) and 0.02% sodium azide	100 ug

[Bulk quote request](#)

Availability	1-3 business days
Species Reactivity	Human
Predicted Reactivity	Cow, Mouse, Rat
Format	Antigen affinity purified
Host	Goat
Clonality	Polyclonal (goat origin)
Isotype	Goat Ig
Purity	Antigen affinity
Gene ID	3394
Applications	Western Blot : 0.5-2ug/ml IHC (FFPE) : 5-10ug/ml ELISA (peptide) LOD : 1:8000
Limitations	This IRF8 antibody is available for research use only.



Western blot testing of K562 lysate with IRF8 antibody at 1ug/ml. Predicted molecular weight ~48 kDa.



IHC testing of FFPE human tonsil tissue with IRF8 antibody at 5ug/ml. Steamed antigen retrieval with citrate buffer pH 6, AP-staining.

Description

Additional name(s) for this target protein: Interferon regulatory factor 8, ICSBP1, interferon consensus sequence binding protein 1

Application Notes

Optimal dilution of the IRF8 antibody should be determined by the researcher.

Immunogen

Amino acids QRSFFRENQQITV were used as the immunogen for this IRF8 antibody.

Storage

Aliquot and store the IRF8 antibody at -20oC.