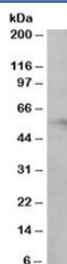


## IRF6 Antibody (R36249)

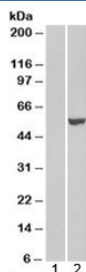
Catalog No.	Formulation	Size
R36249-100UG	0.5 mg/ml in 1X TBS, pH7.3, with 0.5% BSA (US sourced) and 0.02% sodium azide	100 ug

[Bulk quote request](#)

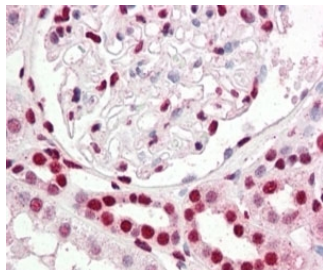
Availability	1-3 business days
Species Reactivity	Human
Predicted Reactivity	Mouse
Format	Antigen affinity purified
Host	Goat
Clonality	Polyclonal (goat origin)
Isotype	Goat Ig
Purity	Antigen affinity
Gene ID	3664
Localization	Nuclear, cytoplasmic
Applications	Western Blot : 0.2-1ug/ml Immunohistochemistry (FFPE) : 2-5ug/ml ELISA (peptide) LOD : 1:32000
Limitations	This IRF6 antibody is available for research use only.



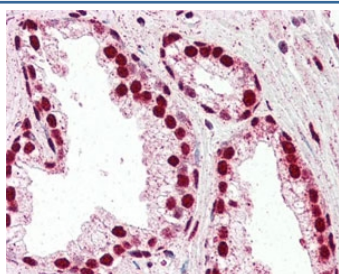
Western blot testing of human ovary lysate with IRF6 antibody at 0.2ug/ml. Predicted molecular weight: ~53/42 kDa (isoforms 1/2).



Western blot of HEK293 lysate overexpressing IRF6 and probed with IRF6 antibody (mock transfection in lane 1). Predicted molecular weight: ~53/42 kDa (isoforms 1/2).



IHC staining of FFPE human kidney with IRF6 antibody at 2.5ug/ml. HIER: steamed with pH6 citrate buffer, AP-staining.



IHC staining of FFPE human prostate tissue with IRF6 antibody at 2.5ug/ml. HIER: steamed with pH6 citrate buffer, AP-staining.

## Description

Additional name(s) for this target protein: Interferon regulatory factor 6

## Application Notes

Optimal dilution of the IRF6 antibody should be determined by the researcher.

## Immunogen

Amino acids TPSTMLPPALPPQ were used as the immunogen for this IRF6 antibody. The sequence is common to isoforms 1 and 2.

## Storage

Aliquot and store the IRF6 antibody at -20°C.