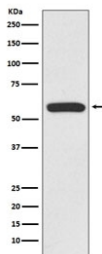


## IRF6 Antibody / Interferon Regulatory Factor 6 [clone GHD-9] (RQ4714)

Catalog No.	Formulation	Size
RQ4714	Antibody in PBS with 0.02% sodium azide, 50% glycerol and 0.4-0.5mg/ml BSA	100 ul

[Bulk quote request](#)

<b>Availability</b>	1-2 weeks
<b>Species Reactivity</b>	Human
<b>Format</b>	Purified
<b>Host</b>	Rabbit
<b>Clonality</b>	Rabbit Monoclonal
<b>Isotype</b>	Rabbit IgG
<b>Clone Name</b>	GHD-9
<b>Purity</b>	Affinity purified
<b>UniProt</b>	O14896
<b>Applications</b>	Western Blot : 1:1000-1:2000
<b>Limitations</b>	This IRF6 antibody is available for research use only.



Western blot testing of human Jurkat cell lysate with IRF6 antibody. Predicted molecular weight: ~53 kDa.

### Description

The IRF6 encodes a member of the interferon regulatory transcription factor (IRF) family. Family members share a highly-conserved N-terminal helix-turn-helix DNA-binding domain and a less conserved C-terminal protein-binding domain. The encoded protein may be a transcriptional activator. Mutations in this gene can cause van der Woude syndrome and popliteal pterygium syndrome. Mutations in this gene are also associated with non-syndromic orofacial cleft type 6. [RefSeq]

## **Application Notes**

Optimal dilution of the IRF6 antibody should be determined by the researcher.

## **Immunogen**

A synthetic peptide specific to human IRF6 was used as the immunogen for the IRF6 antibody.

## **Storage**

Store the IRF6 antibody at -20oC.