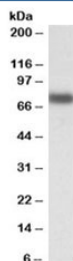


IRF2BP1 Antibody (R35227)

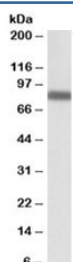
Catalog No.	Formulation	Size
R35227-100UG	0.5 mg/ml in 1X TBS, pH7.3, with 0.5% BSA (US sourced) and 0.02% sodium azide	100 ug

[Bulk quote request](#)

Availability	1-3 business days
Species Reactivity	Human, Mouse
Predicted Reactivity	Dog, Rat
Format	Antigen affinity purified
Host	Goat
Clonality	Polyclonal (goat origin)
Isotype	Goat Ig
Purity	Antigen affinity
Gene ID	26145
Applications	Western Blot : 0.1-0.3ug/ml ELISA (peptide) LOD : 1:32000
Limitations	This IRF2BP1 antibody is available for research use only.



Western blot testing of HepG2 lysate with IRF2BP1 antibody at 0.1ug/ml. Predicted molecular weight: ~62kDa but can be observed at up to 75kDa.



Western blot testing of nuclear NIH3T3 lysate with IRF2BP1 antibody at 0.3ug/ml. Predicted molecular weight: ~62kDa but can be observed at up to 75kDa.

Description

Additional name(s) for this target protein: Interferon regulatory factor 2 binding protein 1

Application Notes

Optimal dilution of the IRF2BP1 antibody should be determined by the researcher.

Immunogen

Amino acids QDRYDRATSSGRLP were used as the immunogen for this IRF2BP1 antibody.

Storage

Aliquot and store the IRF2BP1 antibody at -20oC.