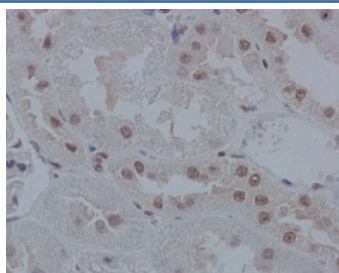


## IRF1 Antibody / Interferon regulatory factor 1 [clone DHE-9] (RQ5339)

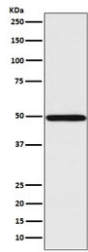
Catalog No.	Formulation	Size
RQ5339	Antibody in PBS with 0.02% sodium azide, 50% glycerol and 0.4-0.5mg/ml BSA	100 ul

[Bulk quote request](#)

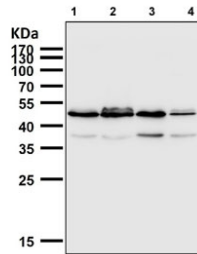
Availability	1-2 weeks
Species Reactivity	Human, Rat
Format	Purified
Host	Rabbit
Clonality	Rabbit Monoclonal
Isotype	Rabbit IgG
Clone Name	DHE-9
Purity	Affinity purified
UniProt	P10914
Localization	Nuclear, cytoplasmic
Applications	Western Blot : 1:500-1:1000 Immunohistochemistry (FFPE) : 1:50-1:100 Immunofluorescence : 1:50-1:100
Limitations	This IRF1 antibody is available for research use only.



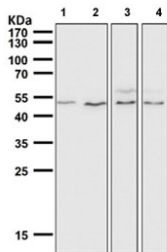
IHC staining of FFPE rat kidney tissue with IRF1 antibody. HIER: boil tissue sections in pH6, 10mM citrate buffer, for 10-20 min and allow to cool before testing.



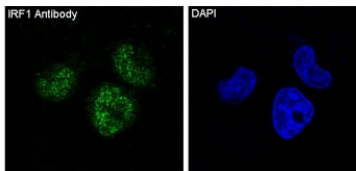
Western blot testing of human Jurkat cell lysate with IRF1 antibody. Expected molecular weight: ~37 kDa (unmodified), 45-50 kDa (modified).



Western blot testing of human 1) HaCaT, 2) Raji, 3) K562 and 4) Daudi cell lysate with IRF1 antibody. Expected molecular weight: ~37 kDa (unmodified), 45-50 kDa (modified).



Western blot testing of 1) mouse heart, 2) mouse liver, 3) mouse skin and 4) rat skin tissue lysate with IRF1 antibody. Expected molecular weight: ~37 kDa (unmodified), 45-50 kDa (modified).



Immunofluorescent staining of FFPE human HeLa cells with IRF1 antibody (green) and DAPI nuclear stain (blue). HIER: steam section in pH6 citrate buffer for 20 min.

## Description

The protein encoded by the IRF1 gene is a transcriptional regulator and tumor suppressor, serving as an activator of genes involved in both innate and acquired immune responses. The encoded protein activates the transcription of genes involved in the body's response to viruses and bacteria, playing a role in cell proliferation, apoptosis, the immune response, and DNA damage response. This protein represses the transcription of several other genes. As a tumor suppressor, it both suppresses tumor cell growth and stimulates an immune response against tumor cells. Defects in this gene have been associated with gastric cancer, myelogenous leukemia, and lung cancer. [RefSeq]

## Application Notes

Optimal dilution of the IRF1 antibody should be determined by the researcher.

## Immunogen

A synthetic peptide specific to human Interferon regulatory factor 1 was used as the immunogen for the IRF1 antibody.

## Storage

Store the IRF1 antibody at -20°C.

