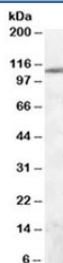


## IRE1 Antibody (R35073)

Catalog No.	Formulation	Size
R35073-100UG	0.5 mg/ml in 1X TBS, pH7.3, with 0.5% BSA (US sourced) and 0.02% sodium azide	100 ug

[Bulk quote request](#)

Availability	1-3 business days
Species Reactivity	Human
Predicted Reactivity	Cow, Dog, Mouse, Pig, Rat
Format	Antigen affinity purified
Host	Goat
Clonality	Polyclonal (goat origin)
Isotype	Goat Ig
Purity	Antigen affinity
Gene ID	2081
Applications	Western Blot : 0.03-0.1ug/ml ELISA (peptide) LOD : 1:8000
Limitations	This IRE1 antibody is available for research use only.



Western blot testing of human pancreas lysate with IRE1 antibody at 0.03ug/ml.  
Predicted molecular weight ~110kDa.

## Description

Additional name(s) for this target protein: Inositol-requiring 1, endoplasmic reticulum to nucleus signaling 1, ERN1

## Application Notes

Optimal dilution of the IRE1 antibody should be determined by the researcher.

## **Immunogen**

Amino acids PNAHGKIKAMISD were used as the immunogen for this IRE1 antibody.

## **Storage**

Aliquot and store the IRE1 antibody at -20oC.