

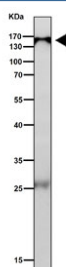
## IPO9 Antibody / Importin 9 / IMP9 / RANBP9 [clone 28I90] (RQ8596)

Catalog No.	Formulation	Size
RQ8596	Antibody in PBS with 0.02% sodium azide, 50% glycerol and 0.4-0.5mg/ml BSA	100 ug

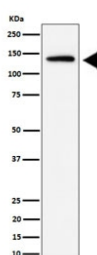
Recombinant **RABBIT MONOCLONAL**

[Bulk quote request](#)

Availability	1-3 days
Species Reactivity	Human, Mouse
Format	Purified
Host	Rabbit
Clonality	Recombinant Rabbit Monoclonal
Isotype	Rabbit IgG
Clone Name	28I90
Purity	Affinity chromatography
UniProt	Q96P70
Applications	Western Blot : 1:500-1:2000
Limitations	This IPO9 antibody is available for research use only.



Western blot testing of mouse lung tissue lysate with IPO9 antibody. Predicted molecular weight ~116 kDa, but it is often observed at higher molecular weights due to protein complexing.



Western blot testing of human HeLa cell lysate with IPO9 antibody. Predicted molecular weight ~116 kDa, but it is often observed at higher molecular weights due to protein complexing.

## Description

Importin 9 is a nuclear transport receptor that mediates nuclear import of proteins, such as histones, proteasome and actin. [UniProt]

## Application Notes

Optimal dilution of the IPO9 antibody should be determined by the researcher.

## Immunogen

A synthetic peptide from human Importin 9 protein was used as the immunogen for the IPO9 antibody.

## Storage

Store the IPO9 antibody at -20oC.