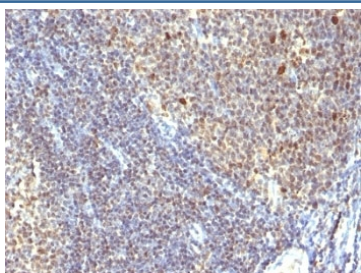


IPO38 Antibody (Proliferation Marker) [clone SPM260] (V3078)

Catalog No.	Formulation	Size
V3078-100UG	0.2 mg/ml in 1X PBS with 0.1 mg/ml BSA (US sourced) and 0.05% sodium azide	100 ug
V3078-20UG	0.2 mg/ml in 1X PBS with 0.1 mg/ml BSA (US sourced) and 0.05% sodium azide	20 ug
V3078SAF-100UG	1 mg/ml in 1X PBS; BSA free, sodium azide free	100 ug
V3078IHC-7ML	Prediluted in 1X PBS with 0.1 mg/ml BSA (US sourced) and 0.05% sodium azide; *For IHC use only*	7 ml

[Bulk quote request](#)

Availability	1-3 business days
Species Reactivity	Human
Format	Purified
Host	Mouse
Clonality	Monoclonal (mouse origin)
Isotype	Mouse IgM, kappa
Clone Name	SPM260
Purity	PEG precipitation
UniProt	Not Known
Localization	Nuclear
Applications	Immunohistochemistry (FFPE) : 1-2ug/ml for 30 min at RT
Limitations	This IPO38 antibody is available for research use only.



IHC: Formalin-fixed, paraffin-embedded human tonsil stained with IPO38 antibody (SPM260).

Description

Recognizes a protein of 14-16kDa, which is a novel nuclear antigen of proliferating cells. IPO-38 antigen is present in the nuclei of proliferating cells such as Hodgkin's disease and non-Hodgkin's lymphomas, different forms of leukemias, breast and colorectal carcinomas, and PHA-stimulated lymphocytes. It is not expressed in the cells of non-stimulated lymphocytes and granulocytes. IPO-38 can be a useful marker of cell proliferation during monitoring of tumor progression.

Application Notes

Optimal dilution of the IPO38 antibody should be determined by the researcher.

1. Staining of formalin-fixed tissues requires boiling tissue sections in pH 9 10mM Tris with 1mM EDTA for 10-20 min followed by cooling at RT for 20 min.
2. The prediluted format is supplied in a dropper bottle and is optimized for use in IHC. After epitope retrieval step (if required), drip mAb solution onto the tissue section and incubate at RT for 30 min.

Immunogen

Spleen cells from a patient with hairy cell leukemia were used as the immunogen for the IPO38 antibody.

Storage

Store the IPO38 antibody at 2-8°C (with azide) or aliquot and store at -20°C or colder (without azide).