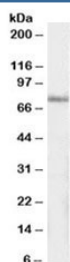


IP3KC Antibody (R34013)

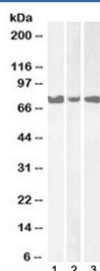
Catalog No.	Formulation	Size
R34013-100UG	0.5 mg/ml in 1X TBS, pH7.3, with 0.5% BSA (US sourced) and 0.02% sodium azide	100 ug

[Bulk quote request](#)

Availability	1-3 business days
Species Reactivity	Human
Format	Antigen affinity purified
Host	Goat
Clonality	Polyclonal (goat origin)
Isotype	Goat Ig
Purity	Antigen affinity
Gene ID	80271
Applications	Western Blot : 1-3ug/ml ELISA (peptide) LOD : 1:2000
Limitations	This IP3KC antibody is available for research use only.



Western blot testing of human pancreas lysate with IP3KC antibody at 1ug/ml.
Predicted/observed molecular weight: ~75kDa.



Western blot testing of human 1) pancreas, 2) heart and 3) skeletal muscle lysate with IP3KC antibody at 1ug/ml. Predicted/observed molecular weight: ~75kDa.

Description

Additional name(s) for this target protein: Inositol 1,4,5-trisphosphate 3-kinase C; ITPKC

Application Notes

Optimal dilution of the IP3KC antibody should be determined by the researcher.

Immunogen

Amino acids ETERPKQKTEPDRSS were used as the immunogen for this IP3KC antibody.

Storage

Aliquot and store the IP3KC antibody at -20oC.