

Involucrin Antibody [clone SY5] (V2164)

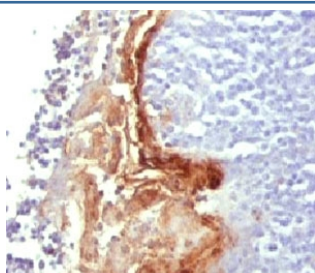
Catalog No.	Formulation	Size
V2164-100UG	0.2 mg/ml in 1X PBS with 0.1 mg/ml BSA (US sourced) and 0.05% sodium azide	100 ug
V2164-20UG	0.2 mg/ml in 1X PBS with 0.1 mg/ml BSA (US sourced) and 0.05% sodium azide	20 ug
V2164SAF-100UG	1 mg/ml in 1X PBS; BSA free, sodium azide free	100 ug
V2164IHC-7ML	Prediluted in 1X PBS with 0.1 mg/ml BSA (US sourced) and 0.05% sodium azide; *For IHC use only*	7 ml



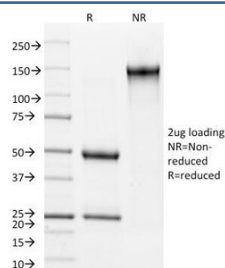
Citations (9)

[Bulk quote request](#)

Species Reactivity	Human
Format	Purified
Clonality	Monoclonal (mouse origin)
Isotype	Mouse IgG1, kappa
Clone Name	SY5
Purity	Protein G affinity chromatography
Buffer	1X PBS, pH 7.4
Gene ID	3713
Localization	Cytoplasmic
Applications	Immunohistochemistry (FFPE) : 0.1-0.2ug/ml for 30 min at RT
Limitations	This Involucrin antibody is available for research use only.



IHC analysis of FFPE human tonsil tissue and Involucrin antibody.



SDS-PAGE Analysis of Purified, BSA-Free Involucrin Antibody (clone SY5).
Confirmation of Integrity and Purity of the Antibody.

Description

This antibody recognizes a protein of 66-170 kDa, identified as involucrin. In Western blotting of cultured human keratinocytes, this antibody reacts with a 120 kDa protein. It stains the involucrin in a variety of sizes: 170 kDa in MCF-7 cells, a doublet of ~115 and 150kDa in gorilla and owl monkey, 66kDa in dog, and a doublet of 105kDa in pig. Its epitope maps between amino acids 421-568 of human involucrin. Involucrin is expressed in a range of stratified squamous epithelia, including the cornea, which lacks a distinct cornified layer. In normal epidermis, it is first expressed in the upper spinous layers, and in keratinocyte cultures, all cells that have left the basal layer express it. Involucrin expression is altered in pathological conditions: in psoriasis and other benign epidermal hyperplasias, involucrin expression begins closer to the basal layer than normal; expression is abnormal in squamous cell carcinomas and premalignant lesions, and is reduced in severe dysplasias of the larynx and cervix.

Application Notes

The concentration stated for each application is a general starting point. Variations in protocols, secondaries and substrates may require the antibody to be titrated up or down for optimal performance.

1. Staining of formalin-fixed tissues is enhanced by digestion with trypsin Protease XXV (Sigma) at 1mg/ml PBS for 5 min at 37°C.
2. The prediluted format is supplied in a dropper bottle and is optimized for use in IHC. After epitope retrieval step (if required), drip mAb solution onto the tissue section and incubate at RT for 30 min.

Immunogen

Purified Involucrin from human keratinocytes was used as the immunogen for this antibody.

Storage

Store the Involucrin antibody at 2-8°C (with azide) or aliquot and store at -20°C or colder (without azide).

Alternate Names

INVO_HUMAN, IVL, Involucrin antibody

References (1)