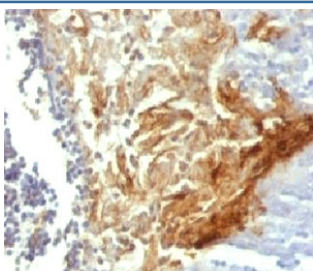


Involucrin Antibody [clone INVO49] (V7103)

Catalog No.	Formulation	Size
V7103-100UG	0.2 mg/ml in 1X PBS with 0.1 mg/ml BSA (US sourced) and 0.05% sodium azide	100 ug
V7103-20UG	0.2 mg/ml in 1X PBS with 0.1 mg/ml BSA (US sourced) and 0.05% sodium azide	20 ug
V7103SAF-100UG	1 mg/ml in 1X PBS; BSA free, sodium azide free	100 ug
V7103IHC-7ML	Prediluted in 1X PBS with 0.1 mg/ml BSA (US sourced) and 0.05% sodium azide; *For IHC use only*	7 ml

[Bulk quote request](#)

Availability	1-3 business days
Species Reactivity	Human
Format	Purified
Clonality	Monoclonal (mouse origin)
Isotype	Mouse IgG1, kappa
Clone Name	INVO49
Purity	Protein G affinity chromatography
UniProt	P07476
Localization	Cytoplasmic
Applications	Immunohistochemistry (FFPE) : 1-2ug/ml for 30 min at RT Prediluted IHC Only Format : incubate for 30 min at RT (1)
Limitations	This Involucrin antibody is available for research use only.



IHC testing of FFPE human tonsil with Involucrin antibody (clone INVO49). Staining of formalin-fixed tissues is enhanced by digestion with Trypsin or Protease XXV at 1mg/ml PBS for 5 min at 37°C. Enzyme digestion is more effective than citrate buffer based epitope unmasking.

Description

Involucrin is a highly reactive, soluble, transglutaminase substrate protein present in keratinocytes of epidermis and other stratified squamous epithelia. It first appears in the cell cytosol, but ultimately becomes cross-linked to membrane proteins by transglutaminase thus helping in the formation of an insoluble envelope beneath the plasma membrane functioning as a glutamyl donor during assembly of the cornified envelope. [Wiki]

Application Notes

Titering of the Involucrin antibody may be required for optimal performance.

1. The prediluted format is supplied in a dropper bottle and is optimized for use in IHC. After epitope retrieval step (if required), drip mAb solution onto the tissue section and incubate at RT for 30 min.

Immunogen

Purified protein was used as the immunogen for the Involucrin antibody.

Storage

Store the Involucrin antibody at 2-8oC (with azide) or aliquot and store at -20oC or colder (without azide).