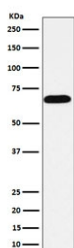


Intestinal Alkaline Phosphatase Antibody / ALPI [clone AEGC-1] (RQ5294)

Catalog No.	Formulation	Size
RQ5294	Antibody in PBS with 0.02% sodium azide, 50% glycerol and 0.4-0.5mg/ml BSA	100 ul

[Bulk quote request](#)

Availability	1-2 weeks
Species Reactivity	Human
Format	Purified
Clonality	Rabbit Monoclonal
Isotype	Rabbit IgG
Clone Name	AEGC-1
Purity	Affinity purified
UniProt	P09923
Applications	Western Blot : 1:500-1:2000
Limitations	This Intestinal Alkaline Phosphatase antibody is available for research use only.



Western blot testing of human HeLa cell lysate with Intestinal Alkaline Phosphatase antibody. Predicted molecular weight: 57-68 kDa depending on glycosylation level.

Description

There are at least four distinct but related alkaline phosphatases: intestinal, placental, placental-like, and liver/bone/kidney (tissue non-specific). The intestinal alkaline phosphatase gene encodes a digestive brush-border enzyme. This enzyme is a component of the gut mucosal defense system and is thought to function in the detoxification of lipopolysaccharide, and in the prevention of bacterial translocation in the gut. [RefSeq]

Application Notes

Optimal dilution of the Intestinal Alkaline Phosphatase antibody should be determined by the researcher.

Immunogen

A synthetic peptide specific to human Alkaline phosphatase / ALPI was used as the immunogen for the Intestinal Alkaline Phosphatase antibody.

Storage

Store the Intestinal Alkaline Phosphatase antibody at -20oC.