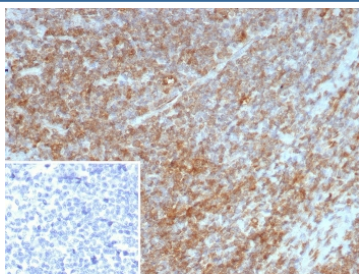


Interleukin-7 Antibody / IL-7 [clone IL7/4269] (V5247)

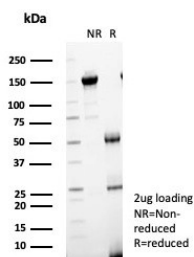
Catalog No.	Formulation	Size
V5247-100UG	0.2 mg/ml in 1X PBS with 0.1 mg/ml BSA (US sourced), 0.05% sodium azide	100 ug
V5247-20UG	0.2 mg/ml in 1X PBS with 0.1 mg/ml BSA (US sourced), 0.05% sodium azide	20 ug
V5247SAF-100UG	1 mg/ml in 1X PBS; BSA free, sodium azide free	100 ug

[Bulk quote request](#)

Availability	1-3 business days
Species Reactivity	Human
Format	Purified
Host	Mouse
Clonality	Monoclonal (mouse origin)
Isotype	Mouse IgG2, kappa
Clone Name	IL7/4269
Purity	Protein A/G affinity
UniProt	P13232
Localization	Secreted
Applications	Immunohistochemistry (FFPE) : 1-2ug/ml for 30 min at RT
Limitations	This Interleukin-7 antibody is available for research use only.



IHC staining of FFPE human tonsil tissue with Interleukin-7 antibody (clone IL7/4269). Inset: PBS used in place of primary Ab (secondary Ab negative control). HIER: boil tissue sections in pH 9 10mM Tris with 1mM EDTA for 20 min and allow to cool before testing.



SDS-PAGE analysis of purified, BSA-free Interleukin-7 antibody (clone IL7/4269) as confirmation of integrity and purity.

Description

Interleukin-7 (IL-7) was originally described as a factor capable of inducing in vitro proliferation of pre-B cells from marrow cultures. The IL-7 gene encodes a protein 177 amino acids in length. IL-7 exerts its biological function through the IL-7 receptor which is expressed on pre-B cells, thymocytes and bone marrow-derived macrophages. The IL-7 receptor is composed of an IL-7 receptor specific chain and the IL-2 receptor gamma chain common to the IL-2, IL-4, IL-7, IL-9 and IL-15 receptors. IL-7 stimulation leads to the activation of Janus tyrosine kinase family members JAK1 and JAK3. Other studies have shown that in T cells, the IL-7 receptor-specific chain associates with the Src kinases family Lck and Fyn. IL-7 induces phosphorylation of Insulin receptor substrate-1 (IRS-1) and Insulin receptor substrate-2 (IRS-2), originally called 4PS.

Application Notes

Optimal dilution of the Interleukin-7 antibody should be determined by the researcher.

Immunogen

A recombinant partial protein sequence (within amino acids 27-177) from the mature human protein was used as the immunogen for the Interleukin-7 antibody.

Storage

Aliquot the Interleukin-7 antibody and store frozen at -20oC or colder. Avoid repeated freeze-thaw cycles.