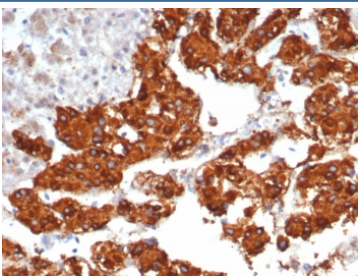


Interleukin-31 Antibody / IL-31 [clone IL31/7333] (V4318)

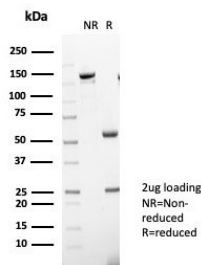
Catalog No.	Formulation	Size
V4318-100UG	0.2 mg/ml in 1X PBS with 0.1 mg/ml BSA (US sourced), 0.05% sodium azide	100 ug
V4318-20UG	0.2 mg/ml in 1X PBS with 0.1 mg/ml BSA (US sourced), 0.05% sodium azide	20 ug
V4318SAF-100UG	1 mg/ml in 1X PBS; BSA free, sodium azide free	100 ug

[Bulk quote request](#)

Availability	1-3 business days
Species Reactivity	Human
Format	Purified
Host	Mouse
Clonality	Monoclonal (mouse origin)
Isotype	Mouse IgG
Clone Name	IL31/7333
Purity	Protein A/G affinity
UniProt	Q6EBC2
Localization	Secreted
Applications	Immunohistochemistry (FFPE) : 1-2ug/ml for 30 minutes at RT
Limitations	This Interleukin-31 antibody is available for research use only.



IHC staining of FFPE human adrenal gland tissue with Interleukin-31 antibody (clone IL31/7333). HIER: boil tissue sections in pH 9 10mM Tris with 1mM EDTA for 20 min and allow to cool before testing.



SDS-PAGE analysis of purified, BSA-free Interleukin-31 antibody (clone IL31/7333) as confirmation of integrity and purity.

Description

IL-31 is a T cell cytokine that is preferentially produced by T helper type 2 cells. IL-31 signals through a heterodimeric receptor composed of the IL-31 receptor (IL-31R) and the oncostatin M receptor (OSM). This receptor complex recruits JAK1, JAK2, Stat1, Stat3 and Stat5 signaling pathways, as well as the PI3 kinase/AKT cascade. SHP-2 and Shc adapter molecules are also recruited and contribute to an increased activation of the MAP kinase pathway in response to IL-31. Overexpression of IL-31 in mice results in pruritus and skin dermatitis resembling human atopic dermatitis (AD). Comparisons between skin from patients with AD and healthy skin showed IL-31R expression at higher levels on epidermal keratinocytes in AD samples. Infiltrating cells, more numerous in skin from patients with AD compared with that of healthy individuals, expressed IL-31 mRNA. IL-31 may participate in the cause of itch sensation and promote scratching behavior in NC/Nga mice with atopic dermatitis, and may represent a novel target for antipruritic drug development.

Application Notes

Optimal dilution of the Interleukin-31 antibody should be determined by the researcher.

Immunogen

A recombinant partial protein sequence (within amino acids 1-164) from the human protein was used as the immunogen for the Interleukin-31 antibody.

Storage

Aliquot the Interleukin-31 antibody and store frozen at -20°C or colder. Avoid repeated freeze-thaw cycles.