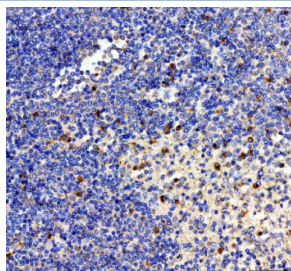


## Interleukin-2 Antibody / IL-2 (R32742)

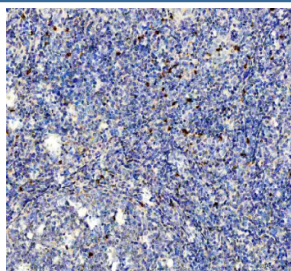
Catalog No.	Formulation	Size
R32742	0.5mg/ml if reconstituted with 0.2ml sterile DI water	100 ug

**Bulk quote request**

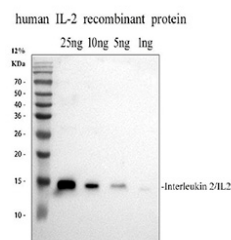
<b>Availability</b>	1-3 business days
<b>Species Reactivity</b>	Human
<b>Format</b>	Antigen affinity purified
<b>Clonality</b>	Polyclonal (rabbit origin)
<b>Isotype</b>	Rabbit IgG
<b>Purity</b>	Antigen affinity
<b>Buffer</b>	Lyophilized from 1X PBS with 2% Trehalose
<b>UniProt</b>	P60568
<b>Applications</b>	Western Blot : 0.5-1ug/ml Immunohistochemistry (FFPE) : 2-5ug/ml ELISA : 0.1-0.5ug/ml
<b>Limitations</b>	This Interleukin-2 antibody is available for research use only.



IHC staining of FFPE human spleen tissue with Interleukin-2 antibody, HRP-labeled secondary and DAB substrate. HIER: boil tissue sections in pH8 EDTA for 20 min and allow to cool before testing.



IHC staining of FFPE human tonsil tissue with Interleukin-2 antibody, HRP-labeled secondary and DAB substrate. HIER: boil tissue sections in pH8 EDTA for 20 min and allow to cool before testing.



Western blot testing of human recombinant Interleukin-2 protein with Interleukin-2 antibody. Predicted molecular weight: 14-18 kDa.

## Description

Interleukin-2 is a crucial cytokine in the immune system that plays a central role in the activation and proliferation of T cells. It is produced primarily by activated CD4-positive T lymphocytes and is essential for the growth, differentiation, and survival of various immune cells, including regulatory T cells and natural killer cells. Through its signaling, Interleukin-2 helps maintain immune tolerance and modulates immune responses during infection, inflammation, and cancer.

The gene encoding Interleukin-2 gives rise to multiple transcript variants that can result in different isoforms of the protein. These isoforms may vary in their biological activity and stability, influencing immune system dynamics. Understanding the expression patterns and functions of Interleukin-2 isoforms is important in both immunology research and therapeutic development.

A high-quality Interleukin-2 antibody is indispensable for researchers studying immune signaling pathways and cytokine networks. The Interleukin-2 antibody can be used to detect the protein in western blot, immunohistochemistry, flow cytometry, and ELISA. NSJ Bioreagents offers a reliable Interleukin-2 antibody designed for specificity and performance, enabling accurate detection in both basic research and clinical applications.

## Application Notes

Optimal dilution of the Interleukin-2 antibody should be determined by the researcher.

## Immunogen

Amino acids A21-T153 from the human protein were used as the immunogen for the Interleukin-2 antibody.

## Storage

After reconstitution, the Interleukin-2 antibody can be stored for up to one month at 4°C. For long-term, aliquot and store at -20°C. Avoid repeated freezing and thawing.