

Interleukin-2 Antibody / IL-2 [clone IL2/4987] (V5060)

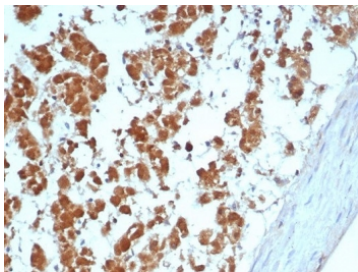
Catalog No.	Formulation	Size
V5060-100UG	0.2 mg/ml in 1X PBS with 0.1 mg/ml BSA (US sourced), 0.05% sodium azide	100 ug
V5060-20UG	0.2 mg/ml in 1X PBS with 0.1 mg/ml BSA (US sourced), 0.05% sodium azide	20 ug
V5060SAF-100UG	1 mg/ml in 1X PBS; BSA free, sodium azide free	100 ug

[Bulk quote request](#)

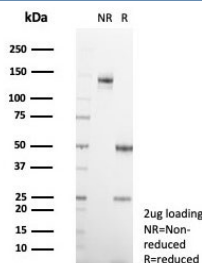
Availability	1-3 business days
Species Reactivity	Human
Format	Purified
Clonality	Monoclonal (mouse origin)
Isotype	Mouse IgG2b, kappa
Clone Name	IL2/4987
Purity	Protein A/G affinity
UniProt	P60568
Localization	Secreted
Applications	Immunohistochemistry (FFPE) : 1-2ug/ml for 30 min at RT
Limitations	This Interleukin-2 antibody is available for research use only.



Analysis of a HuProt(TM) microarray containing more than 19,000 full-length human proteins using Interleukin-2 antibody (clone IL2/4987). Z- and S- Score: The Z-score represents the strength of a signal that a monoclonal antibody (in combination with a fluorescently-tagged anti-IgG secondary antibody) produces when binding to a particular protein on the HuProt(TM) array. Z-scores are described in units of standard deviations (SD's) above the mean value of all signals generated on that array. If targets on HuProt(TM) are arranged in descending order of the Z-score, the S-score is the difference (also in units of SD's) between the Z-score. S-score therefore represents the relative target specificity of a mAb to its intended target. A mAb is considered to be specific to its intended target, if the mAb has an S-score of at least 2.5. For example, if a mAb binds to protein X with a Z-score of 43 and to protein Y with a Z-score of 14, then the S-score for the binding of that mAb to protein X is equal to 29.



IHC staining of FFPE human adrenal gland tissue with Interleukin-2 antibody (clone IL2/4987). HIER: boil tissue sections in pH 9 10mM Tris with 1mM EDTA for 20 min and allow to cool before testing.



SDS-PAGE analysis of purified, BSA-free Interleukin-2 antibody (clone IL2/4987) as confirmation of integrity and purity.

Description

Interleukin-2 (IL-2) is a T cell stimulatory cytokine that induces T cell proliferation and NK cell proliferation and activation. Produced by T-cells in response to antigenic or mitogenic stimulation, this protein is required for T-cell proliferation and other activities crucial to regulation of the immune response. Can stimulate B-cells, monocytes, lymphokine-activated killer cells, natural killer cells, and glioma cells. The receptor of this cytokine is a heterotrimeric protein complex whose gamma chain is also shared by interleukin 4 (IL4) and interleukin 7 (IL7). IL-2 induces CTLA-4 and also functions as a survival factor for lymphocytes.

Application Notes

Optimal dilution of the Interleukin-2 antibody should be determined by the researcher.

Immunogen

A recombinant partial protein sequence (within amino acids 21-153) from the human protein was used as the immunogen for the Interleukin-2 antibody.

Storage

Aliquot the Interleukin-2 antibody and store frozen at -20oC or colder. Avoid repeated freeze-thaw cycles.