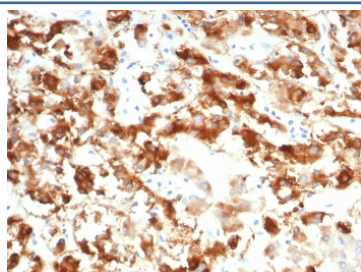


Interleukin 18 receptor alpha Antibody / IL18R1 [clone IL18R1/7592] (V4903)

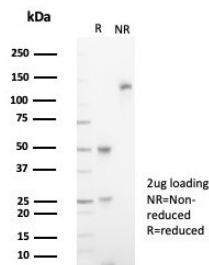
| Catalog No. | Formulation | Size |
|----------------|---|--------|
| V4903-100UG | 0.2 mg/ml in 1X PBS with 0.1 mg/ml BSA (US sourced), 0.05% sodium azide | 100 ug |
| V4903-20UG | 0.2 mg/ml in 1X PBS with 0.1 mg/ml BSA (US sourced), 0.05% sodium azide | 20 ug |
| V4903SAF-100UG | 1 mg/ml in 1X PBS; BSA free, sodium azide free | 100 ug |

Bulk quote request

| | |
|---------------------------|---|
| Availability | 1-3 business days |
| Species Reactivity | Human |
| Format | Purified |
| Clonality | Monoclonal (mouse origin) |
| Isotype | Mouse IgG1, kappa |
| Clone Name | IL18R1/7592 |
| Purity | Protein A/G affinity |
| UniProt | Q13478 |
| Localization | Membrane |
| Applications | Immunohistochemistry (FFPE) : 1-2ug/ml for 30 min at RT |
| Limitations | This Interleukin 18 receptor alpha antibody is available for research use only. |



IHC staining of FFPE human adrenal gland tissue with Interleukin 18 receptor alpha antibody (clone IL18R1/7592). HIER: boil tissue sections in pH 9 10mM Tris with 1mM EDTA for 20 min and allow to cool before testing.



SDS-PAGE analysis of purified, BSA-free Interleukin 18 receptor alpha antibody (clone IL18R1/7592) as confirmation of integrity and purity.

Description

Interleukin-18 (IL-18) has been identified as a molecule that induces IFN-Gamma production and enhances NK cell cytotoxicity. IL-18 receptor (IL-18R) is a type I membrane protein present in lung, leukocytes, spleen, liver, thymus, prostate, small intestine, colon, placenta and heart, and absent from brain, skeletal muscle, pancreas and kidney. IL-18R is present in Hodgkin s disease cell lines, and does not bind IL-1alpha or IL-1beta. The association of IL-18 to IL-18R leads to activation of NFkB. At present two subunits of IL-18R have been characterized: IL-18RAalpha and IL-18Rbeta. IL-18Ralpha has been described as the ligand-binding chain and IL-18Rbeta as the signal-transduction chain.

Application Notes

Optimal dilution of the Interleukin 18 receptor alpha antibody should be determined by the researcher.

Immunogen

A recombinant partial protein sequence (within amino acids 1-200) from the human protein was used as the immunogen for the Interleukin 18 receptor alpha antibody.

Storage

Aliquot the Interleukin 18 receptor alpha antibody and store frozen at -20oC or colder. Avoid repeated freeze-thaw cycles.