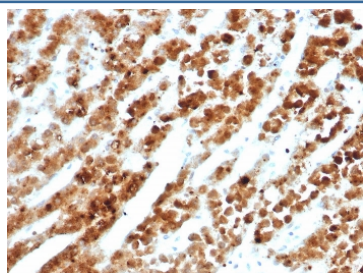


Interleukin-18 receptor accessory protein Antibody / IL18RAP [clone IL18RAP/7771] (V4905)

Catalog No.	Formulation	Size
V4905-100UG	0.2 mg/ml in 1X PBS with 0.1 mg/ml BSA (US sourced), 0.05% sodium azide	100 ug
V4905-20UG	0.2 mg/ml in 1X PBS with 0.1 mg/ml BSA (US sourced), 0.05% sodium azide	20 ug
V4905SAF-100UG	1 mg/ml in 1X PBS; BSA free, sodium azide free	100 ug

Bulk quote request

Availability	1-3 business days
Species Reactivity	Human
Format	Purified
Clonality	Monoclonal (mouse origin)
Isotype	Mouse IgG1, kappa
Clone Name	IL18RAP/7771
Purity	Protein A/G affinity
UniProt	O95256
Localization	Membrane
Applications	Immunohistochemistry (FFPE) : 1-2ug/ml for 30 min at RT
Limitations	This Interleukin-18 receptor accessory protein antibody is available for research use only.



IHC staining of FFPE human adrenal gland tissue with Interleukin-18 receptor accessory protein antibody (clone IL18RAP/7771). HIER: boil tissue sections in pH 9 10mM Tris with 1mM EDTA for 20 min and allow to cool before testing.

Description

The protein encoded by this gene is an accessory subunit of the heterodimeric receptor for interleukin 18 (IL18), a proinflammatory cytokine involved in inducing cell-mediated immunity. This protein enhances the IL18-binding activity of the IL18 receptor and plays a role in signaling by IL18. Mutations in this gene are associated with Crohn's disease and

inflammatory bowel disease, and susceptibility to celiac disease and leprosy. Alternatively spliced transcript variants of this gene have been described, but their full-length nature is not known. [provided by RefSeq, Feb 2014]

Application Notes

Optimal dilution of the Interleukin-18 receptor accessory protein antibody should be determined by the researcher.

Immunogen

A recombinant partial protein sequence (within amino acids 200-400) from the human protein was used as the immunogen for the Interleukin-18 receptor accessory protein antibody.

Storage

Aliquot the Interleukin-18 receptor accessory protein antibody and store frozen at -20oC or colder. Avoid repeated freeze-thaw cycles.