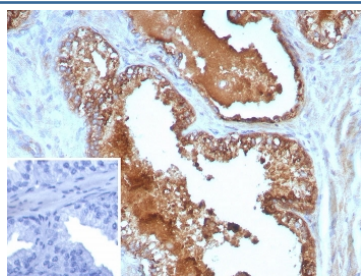


Interleukin 10 Antibody / IL-10 [clone IL10/8711] (V4788)

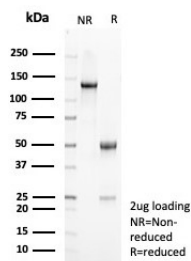
Catalog No.	Formulation	Size
V4788-100UG	0.2 mg/ml in 1X PBS with 0.1 mg/ml BSA (US sourced), 0.05% sodium azide	100 ug
V4788-20UG	0.2 mg/ml in 1X PBS with 0.1 mg/ml BSA (US sourced), 0.05% sodium azide	20 ug
V4788SAF-100UG	1 mg/ml in 1X PBS; BSA free, sodium azide free	100 ug

[Bulk quote request](#)

Availability	1-3 business days
Species Reactivity	Human
Format	Purified
Host	Mouse
Clonality	Monoclonal (mouse origin)
Isotype	Mouse IgG1, kappa
Clone Name	IL10/8711
Purity	Protein A affinity
UniProt	P22301
Localization	Cytoplasm, Secreted, Cell Surface
Applications	Immunohistochemistry (FFPE) : 1-2ug/ml for 30 min at RT
Limitations	This Interleukin 10 antibody is available for research use only.



IHC staining of FFPE human prostate cancer tissue with Interleukin 10 antibody (clone IL10/8711). Inset: PBS used in place of primary Ab (secondary Ab negative control).
HIER: boil tissue sections in pH 9 10mM Tris with 1mM EDTA for 20 min and allow to cool before testing.



SDS-PAGE analysis of purified, BSA-free Interleukin 10 antibody (clone IL10/8711) as confirmation of integrity and purity.

Description

Interleukin 10 (IL10) is a cytokine produced primarily by monocytes and to a lesser extent by lymphocytes. This cytokine has pleiotropic effects in immuno-regulation and inflammation. It down-regulates the expression of Th1 cytokines, MHC class II antigens, and costimulatory molecules on macrophages. It also enhances B cell survival, proliferation, and antibody production. This cytokine can block NF-kappa B activity, and is involved in the regulation of the JAK-STAT signaling pathway. Knockout studies in mice suggested the function of this cytokine as an essential immuno-regulator in the intestinal tract. Mutations in this gene are associated with an increased susceptibility to HIV-1 infection and rheumatoid arthritis.

Application Notes

Optimal dilution of the Interleukin 10 antibody should be determined by the researcher.

Immunogen

Recombinant full-length human Interleukin 10 (IL10) protein was used as the immunogen for the Interleukin 10 antibody.

Storage

Aliquot the Interleukin 10 antibody and store frozen at -20oC or colder. Avoid repeated freeze-thaw cycles.