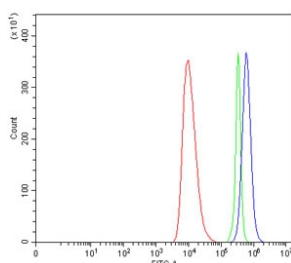


Interleukin-1 receptor-like 1 Antibody / IL1RL1 / ST2 (RQ7284)

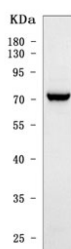
Catalog No.	Formulation	Size
RQ7284	0.5mg/ml if reconstituted with 0.2ml sterile DI water	100 ug

Bulk quote request

Availability	1-3 business days
Species Reactivity	Human
Format	Antigen affinity purified
Host	Rabbit
Clonality	Polyclonal (rabbit origin)
Isotype	Rabbit IgG
Purity	Antigen affinity purified
Buffer	Lyophilized from 1X PBS with 2% Trehalose
UniProt	Q01638
Applications	Western Blot : 0.5-1ug/ml Flow Cytometry : 1-3ug/million cells Direct ELISA : 0.1-0.5ug/ml
Limitations	This Interleukin-1 receptor-like 1 antibody is available for research use only.



Flow cytometry testing of human HEL cells with Interleukin-1 receptor-like 1 antibody at 1ug/million cells (blocked with goat sera); Red=cells alone, Green=isotype control, Blue=Interleukin-1 receptor-like 1 antibody.



Western blot testing of human HepG2 cell lysate with Interleukin-1 receptor-like 1 antibody. Predicted molecular weight: 28-63 kDa (multiple isoforms).

Description

Interleukin 1 receptor-like 1, also known as IL1RL1 and ST2, is a protein that in humans is encoded by the IL1RL1 gene. The protein encoded by this gene is a member of the interleukin 1 receptor family. Studies of the similar gene in mouse suggested that this receptor can be induced by proinflammatory stimuli, and may be involved in the function of helper T cells. This gene, interleukin 1 receptor, type I (IL1R1), interleukin 1 receptor, type II (IL1R2) and interleukin 1 receptor-like 2 (IL1RL2) form a cytokine receptor gene cluster in a region mapped to chromosome 2q12. Alternative splicing of this gene results in multiple transcript variants.

Application Notes

Optimal dilution of the Interleukin-1 receptor-like 1 antibody should be determined by the researcher.

Immunogen

Recombinant human protein (amino acids Q70-Q556) was used as the immunogen for the Interleukin-1 receptor-like 1 antibody.

Storage

After reconstitution, the Interleukin-1 receptor-like 1 antibody can be stored for up to one month at 4oC. For long-term, aliquot and store at -20oC. Avoid repeated freezing and thawing.