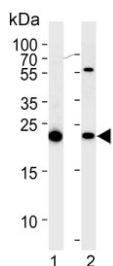


Interleukin-1 Receptor Antagonist Antibody / IL1RA / IL1RN (F54852)

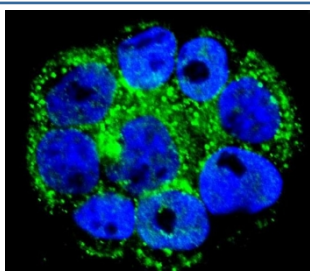
Catalog No.	Formulation	Size
F54852-0.4ML	In 1X PBS, pH 7.4, with 0.09% sodium azide	0.4 ml
F54852-0.08ML	In 1X PBS, pH 7.4, with 0.09% sodium azide	0.08 ml

Bulk quote request

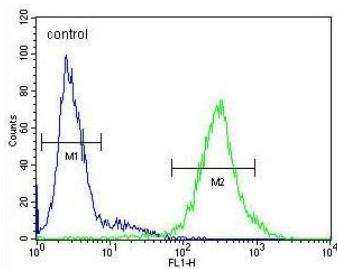
Availability	1-3 business days
Species Reactivity	Human
Format	Purified
Clonality	Polyclonal (rabbit origin)
Isotype	Rabbit Ig
Purity	Purified
UniProt	P18510
Localization	Cytoplasmic
Applications	Western Blot : 1:500-1:1000 Immunofluorescence : 1:10-1:50 Flow Cytometry : 1:10-1:50 (1x10 ⁶ cells)
Limitations	This Interleukin-1 Receptor Antagonist antibody is available for research use only.



Western blot testing of human 1) HEK293 and 2) HeLa cell lysate with Interleukin-1 Receptor Antagonist antibody. Predicted molecular weight ~20 kDa.



Immunofluorescent staining of human WiDr cells with Interleukin-1 Receptor Antagonist antibody (green) and DAPI nuclear stain (blue).



Flow cytometry testing of human HepG2 cells with Interleukin-1 Receptor Antagonist antibody; Blue=isotype control, Green= Interleukin-1 Receptor Antagonist antibody.

Description

The protein is a member of the interleukin 1 cytokine family. This protein inhibits the activities of interleukin 1, alpha (IL1A) and interleukin 1, beta (IL1B), and modulates a variety of interleukin 1 related immune and inflammatory responses. A polymorphism of its gene is reported to be associated with increased risk of osteoporotic fractures and gastric cancer.

Application Notes

The stated application concentrations are suggested starting points. Titration of the Interleukin-1 Receptor Antagonist antibody may be required due to differences in protocols and secondary/substrate sensitivity.

Immunogen

A portion of amino acids 147-177 from the human protein was used as the immunogen for the Interleukin-1 Receptor Antagonist antibody.

Storage

Aliquot the Interleukin-1 Receptor Antagonist antibody and store frozen at -20oC or colder. Avoid repeated freeze-thaw cycles.