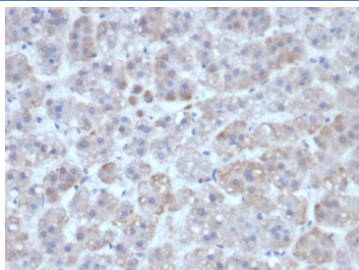


Interleukin-1 beta Antibody / IL1B [clone IL1B/463] (V4914)

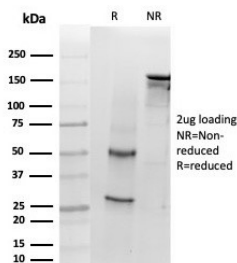
Catalog No.	Formulation	Size
V4914-100UG	0.2 mg/ml in 1X PBS with 0.1 mg/ml BSA (US sourced), 0.05% sodium azide	100 ug
V4914-20UG	0.2 mg/ml in 1X PBS with 0.1 mg/ml BSA (US sourced), 0.05% sodium azide	20 ug
V4914SAF-100UG	1 mg/ml in 1X PBS; BSA free, sodium azide free	100 ug

[Bulk quote request](#)

Availability	1-3 business days
Species Reactivity	Human
Format	Purified
Host	Mouse
Clonality	Monoclonal (mouse origin)
Isotype	Mouse IgG1, kappa
Clone Name	IL1B/463
Purity	Protein A/G affinity
UniProt	P01584
Localization	Cytoplasm, Extracellular (secreted)
Applications	ELISA (Order BSA-free Format For Coating) : Immunohistochemistry (FFPE) : 1-2ug/ml for 30 min at RT
Limitations	This Interleukin-1 beta antibody is available for research use only.



IHC staining of FFPE human adrenal gland tissue with Interleukin-1 beta antibody (clone IL1B/463). HIER: boil tissue sections in pH 9 10mM Tris with 1mM EDTA for 20 min and allow to cool before testing.



SDS-PAGE analysis of purified, BSA-free Interleukin-1 beta antibody (clone IL1B/463) as confirmation of integrity and purity.

Description

Recognizes a protein of 17-31kDa, identified as interleukin 1beta. It shows no cross-reaction with interleukin 1alpha. Epitopes of mAb IL1B/463 and IL1B/4649 are different and provide a good pair for developing an ELISA. This cytokine is produced by activated macrophages as a proprotein, which is proteolytically processed to its active form by caspase 1 (CASP1/ICE). This cytokine is an important mediator of the inflammatory response, and is involved in a variety of cellular activities, including cell proliferation, differentiation, and apoptosis. The induction of cyclooxygenase-2 (PTGS2/COX2) by this cytokine in the central nervous system (CNS) is found to contribute to inflammatory pain hypersensitivity. This gene and eight other interleukin 1 family genes form a cytokine gene cluster on chromosome 2.

Application Notes

Optimal dilution of the Interleukin-1 beta antibody should be determined by the researcher.

Immunogen

Recombinant human IL1B protein was used as the immunogen for the Interleukin-1 beta antibody.

Storage

Aliquot the Interleukin-1 beta antibody and store frozen at -20oC or colder. Avoid repeated freeze-thaw cycles.