

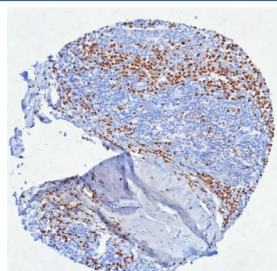
Interferon regulatory factor 4 Antibody / IRF4 / MUM1 [clone MUM1/8560R] (V5165)

Catalog No.	Formulation	Size
V5165-100UG	0.2 mg/ml in 1X PBS with 0.1 mg/ml BSA (US sourced), 0.05% sodium azide	100 ug
V5165-20UG	0.2 mg/ml in 1X PBS with 0.1 mg/ml BSA (US sourced), 0.05% sodium azide	20 ug
V5165SAF-100UG	1 mg/ml in 1X PBS; BSA free, sodium azide free	100 ug

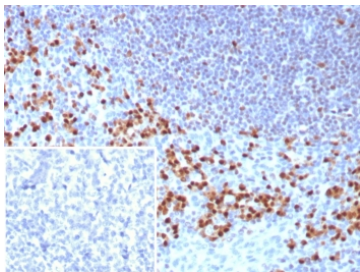
Recombinant **RABBIT MONOCLONAL**

[Bulk quote request](#)

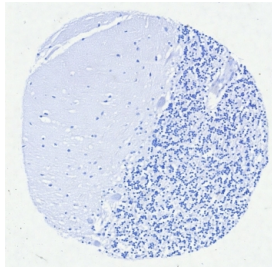
Availability	1-3 business days
Species Reactivity	Human
Format	Purified
Clonality	Recombinant Rabbit Monoclonal
Isotype	Rabbit IgG, kappa
Clone Name	MUM1/8560R
Purity	Protein A/G affinity
UniProt	Q15306
Localization	Nucleus
Applications	Immunohistochemistry (FFPE) : 1-2ug/ml for 30 min at RT
Limitations	This MUM1 antibody is available for research use only.



IHC staining of FFPE human tonsil tissue with Interferon regulatory factor 4 antibody (clone MUM1/8560R). HIER: boil tissue sections in pH 9 10mM Tris with 1mM EDTA for 20 min and allow to cool before testing.



IHC staining of FFPE human tonsil tissue with Interferon regulatory factor 4 antibody (clone MUM1/8560R). Inset: PBS used in place of primary Ab (secondary Ab negative control). HIER: boil tissue sections in pH 9 10mM Tris with 1mM EDTA for 20 min and allow to cool before testing.



Negative control: IHC testing of FFPE human brain tissue with Interferon regulatory factor 4 antibody (clone MUM1/8560R) at 2ug/ml. HIER: boil tissue sections in pH 9 10mM Tris with 1mM EDTA for 20 min and allow to cool before testing.

Description

Interferon regulatory factor 4, also called Multiple myeloma oncogene 1 (MUM1) belongs to the IRF gene family containing at least 10 widely expressed genes with similar DNA binding motif all involved in regulation of cell growth, transformation and induction of apoptosis as well as development of T-cell immune response.

Application Notes

Optimal dilution of the MUM1 antibody should be determined by the researcher.

Immunogen

A recombinant partial protein sequence from the C-terminal region of the human protein was used as the immunogen for the MUM1 antibody.

Storage

Aliquot the MUM1 antibody and store frozen at -20oC or colder. Avoid repeated freeze-thaw cycles.