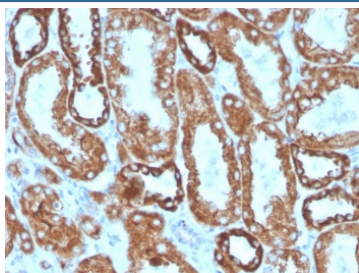


Interferon gamma Antibody [clone IFNG/466] (V3193BTN)

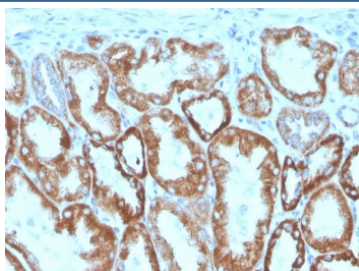
Catalog No.	Formulation	Size
V3193BTN	0.1 mg/ml with 0.1 mg/ml BSA (US sourced), 0.05% sodium azide	500 ul

Bulk quote request

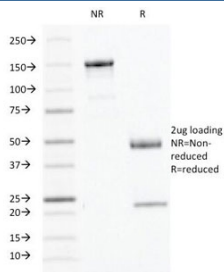
Availability	1-3 business days
Species Reactivity	Human
Format	Biotin Conjugate
Clonality	Monoclonal (mouse origin)
Isotype	Mouse IgG2b, kappa
Clone Name	IFNG/466
Purity	Protein G affinity chromatography
UniProt	P01579
Localization	Cytoplasm, cell surface
Applications	Immunohistochemistry (FFPE) : 2-4ug/ml for 30 minutes at RT
Limitations	This Interferon gamma antibody is available for research use only.



IHC staining of FFPE human kidney with Interferon gamma antibody. HIER: boil tissue sections in pH 9 10mM Tris with 1mM EDTA for 20 min and allow to cool before testing.



IHC staining of FFPE human kidney with Interferon gamma antibody. HIER: boil tissue sections in pH 9 10mM Tris with 1mM EDTA for 20 min and allow to cool before testing.



SDS-PAGE analysis of purified, BSA-free Interferon gamma antibody as confirmation of integrity and purity.

Description

Recognizes a protein of 20-25kDa, identified as human interferon. This MAb is specific to human IFN γ and recognizes both recombinant and native human IFN-gamma. T lymphocytes and NK cells mainly produce IFN γ . It is a pleiotropic cytokine involved in the regulation of nearly all phases of immune and inflammatory responses, including the activation, growth and differentiation of T cell, B cells, macrophages, NK cells and other cell types such as endothelial cells and fibroblasts. It has weak anti-viral and anti-proliferative activity, and potentiates the antiviral and anti-tumor effects of IFN- α/β (type I interferon).

Application Notes

Optimal dilution of the Interferon gamma antibody should be determined by the researcher.

Immunogen

Purified recombinant human full-length protein was used as the immunogen for the Interferon gamma antibody.

Storage

Store the Interferon gamma antibody at 2-8°C (up to one month) or aliquot and store at -20°C (longer term).