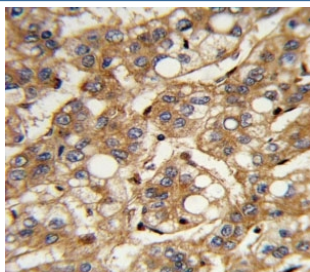


## Interferon beta Antibody (F51190)

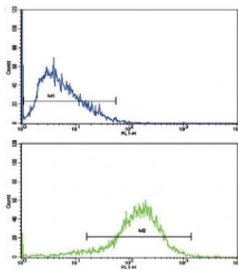
Catalog No.	Formulation	Size
F51190-0.4ML	In 1X PBS, pH 7.4, with 0.09% sodium azide	0.4 ml
F51190-0.08ML	In 1X PBS, pH 7.4, with 0.09% sodium azide	0.08 ml

[Bulk quote request](#)

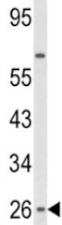
<b>Availability</b>	1-3 business days
<b>Species Reactivity</b>	Human
<b>Predicted Reactivity</b>	Primate
<b>Format</b>	Antigen affinity purified
<b>Host</b>	Rabbit
<b>Clonality</b>	Polyclonal (rabbit origin)
<b>Isotype</b>	Rabbit Ig
<b>Purity</b>	Antigen affinity
<b>UniProt</b>	P01574
<b>Applications</b>	Western Blot : 1:1000 IHC (Paraffin) : 1:10-1:50 Flow Cytometry : 1:10-1:50
<b>Limitations</b>	This Interferon beta antibody is available for research use only.



IHC analysis of FFPE human hepatocarcinoma with IFNB1 antibody



Flow cytometric analysis of HepG2 cells using IFNB1 antibody (blue) compared to a [negative control](#) (green). FITC-conjugated goat-anti-rabbit secondary Ab was used for the analysis.



Western blot analysis of IFNB1 antibody and HepG2 lysate.

## Description

IFNB1 has antiviral, antibacterial and anticancer activities.

## Application Notes

Titration of the Interferon beta antibody may be required due to differences in protocols and secondary/substrate sensitivity.

## Immunogen

A portion of amino acids 39-66 from the human protein was used as the immunogen for this Interferon beta antibody.

## Storage

Aliquot the Interferon beta antibody and store frozen at -20oC or colder. Avoid repeated freeze-thaw cycles.