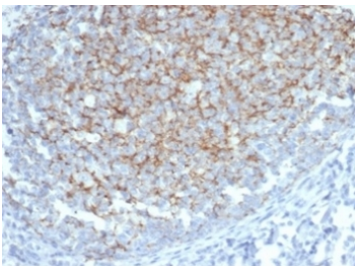


Interferon alpha 1 Antibody / IFNA1 [clone IFNA/6689] (V8790)

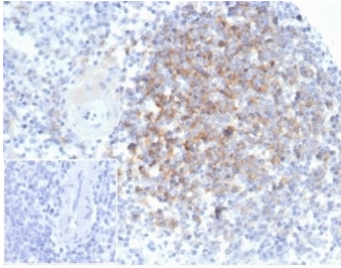
Catalog No.	Formulation	Size
V8790-100UG	0.2 mg/ml in 1X PBS with 0.1 mg/ml BSA (US sourced), 0.05% sodium azide	100 ug
V8790-20UG	0.2 mg/ml in 1X PBS with 0.1 mg/ml BSA (US sourced), 0.05% sodium azide	20 ug
V8790SAF-100UG	1 mg/ml in 1X PBS; BSA free, sodium azide free	100 ug

[Bulk quote request](#)

Availability	1-3 business days
Species Reactivity	Human
Format	Purified
Host	Mouse
Clonality	Monoclonal (mouse origin)
Isotype	Mouse IgG1, kappa
Clone Name	IFNA/6689
Purity	Protein A/G affinity
UniProt	P01562
Localization	Cytoplasm, Secreted
Applications	Western Blot : 1-2ug/ml Immunohistochemistry (FFPE) : 1-2ug/ml
Limitations	This Interferon alpha 1 antibody is available for research use only.



IHC staining of FFPE human tonsil tissue with Interferon alpha 1 antibody (clone IFNA/6689) at 2ug/ml in PBS for 30min RT. HIER: boil tissue sections in pH 9 10mM Tris with 1mM EDTA for 20 min and allow to cool before testing.



IHC staining of FFPE human spleen tissue with Interferon alpha 1 antibody (clone IFNA/6689) at 2ug/ml. Negative control inset: PBS instead of primary antibody to control for secondary binding. HIER: boil tissue sections in pH 9 10mM Tris with 1mM EDTA for 20 min and allow to cool before testing.

Description

This MAb is specific for human interferon alpha 1 and does not cross react with human interferon alpha 2. Interferons are widely used therapeutic agents because of their anti-tumor and anti-viral effects and because of their modulatory effects on the immune system. These cytokines produce their effects by binding to the Type 1 Interferon- Receptor (IFNAR1). Down regulation of this receptor plays a key role in determining the magnitude and duration of cytokine signaling. This down regulation is influenced by phosphorylation of Serine 535 and 539 in the IFNAR1. Produced by macrophages, IFN-alphas have antiviral activities. Interferon stimulates the production of two enzymes: a protein kinase and an oligoadenylate synthetase

Application Notes

Optimal dilution of the Interferon alpha 1 antibody should be determined by the researcher.

Immunogen

Recombinant human IFNA1 protein was used as the immunogen for the Interferon alpha 1 antibody.

Storage

Aliquot the Interferon alpha 1 antibody and store frozen at -20oC or colder. Avoid repeated freeze-thaw cycles.