

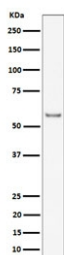
Intercellular adhesion molecule 2 Antibody / ICAM2 [clone 28I27] (RQ8266)

Catalog No.	Formulation	Size
RQ8266	Antibody in PBS with 0.02% sodium azide, 50% glycerol and 0.4-0.5mg/ml BSA	100 ul

Recombinant RABBIT MONOCLONAL

[Bulk quote request](#)

Availability	1-3 weeks
Species Reactivity	Mouse
Format	Purified
Clonality	Recombinant Rabbit Monoclonal
Isotype	Rabbit IgG
Clone Name	28I27
Purity	Affinity chromatography
UniProt	P35330
Applications	Western Blot : 1:500-1:2000
Limitations	This Intercellular adhesion molecule 2 antibody is available for research use only.



Western blot testing of mouse heart tissue lysate with Intercellular adhesion molecule 2 antibody. Expected molecular weight: 31-60 kDa depending on glycosylation level.

Description

ICAM proteins are ligands for the leukocyte adhesion protein LFA-1 (integrin alpha-L/beta-2). ICAM2 may play a role in lymphocyte recirculation by blocking LFA-1-dependent cell adhesion. It mediates adhesive interactions important for antigen-specific immune response, NK-cell mediated clearance, lymphocyte recirculation, and other cellular interactions important for immune response and surveillance. [UniProt]

Application Notes

Optimal dilution of the Intercellular adhesion molecule 2 antibody should be determined by the researcher.

Immunogen

A synthetic peptide derived from human ICAM2 / CD102 was used as the immunogen for the Intercellular adhesion molecule 2 antibody.

Storage

Store the Intercellular adhesion molecule 2 antibody at -20oC.