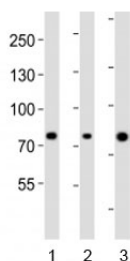


Integrin beta 8 Antibody (F53040)

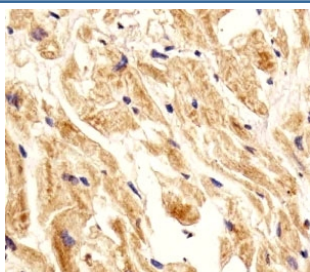
Catalog No.	Formulation	Size
F53040-0.4ML	In 1X PBS, pH 7.4, with 0.09% sodium azide	0.4 ml
F53040-0.08ML	In 1X PBS, pH 7.4, with 0.09% sodium azide	0.08 ml

[Bulk quote request](#)

Availability	1-3 business days
Species Reactivity	Human
Predicted Reactivity	Rabbit
Format	Antigen affinity purified
Host	Rabbit
Clonality	Polyclonal (rabbit origin)
Isotype	Rabbit Ig
Purity	Antigen affinity
UniProt	P26012
Applications	IHC (Paraffin) : 1:25 Western Blot : 1:1000
Limitations	This Integrin beta 8 antibody is available for research use only.



Western blot analysis of lysate from human 1) ovary, 2) placenta and 3) plasma lysate using Integrin beta 8 antibody diluted at 1:1000. Predicted molecular weight: 85/71 kDa (isoforms 1/2).



IHC analysis of FFPE human heart section using Integrin beta 8 antibody; Ab was diluted at 1:25.

Description

Integrin alpha-V/beta-8 is a receptor for fibronectin.

Application Notes

Titration of the Integrin beta 8 antibody may be required due to differences in protocols and secondary/substrate sensitivity.

Immunogen

This Integrin beta 8 antibody was produced from a rabbit immunized with a KLH conjugated synthetic peptide between 197-231 amino acids from the Central region of human ITGB8.

Storage

Aliquot the Integrin beta 8 antibody and store frozen at -20oC or colder. Avoid repeated freeze-thaw cycles.