

Integrin beta 5 Antibody (F43425)

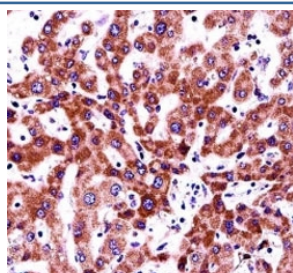
| Catalog No. | Formulation | Size |
|---------------|--|---------|
| F43425-0.4ML | In 1X PBS, pH 7.4, with 0.09% sodium azide | 0.4 ml |
| F43425-0.08ML | In 1X PBS, pH 7.4, with 0.09% sodium azide | 0.08 ml |

Bulk quote request

| | |
|-----------------------------|---|
| Availability | 1-3 business days |
| Species Reactivity | Human |
| Predicted Reactivity | Bovine, Mouse |
| Format | Antigen affinity purified |
| Clonality | Polyclonal (rabbit origin) |
| Isotype | Rabbit Ig |
| Purity | Antigen affinity |
| UniProt | P18084 |
| Applications | Western Blot : 1:1000 IHC (Paraffin) : 1:10-1:50 |
| Limitations | This Integrin beta 5 antibody is available for research use only. |

250
130
95
72
55

Integrin beta 5 antibody western blot analysis in NCI-H460 lysate.



Integrin beta 5 antibody immunohistochemistry analysis in formalin fixed and paraffin embedded human liver tissue.

Description

Integrin alpha-V/beta-5 is a receptor for fibronectin. It recognizes the sequence R-G-D in its ligand.

Application Notes

Titration of the Integrin beta 5 antibody may be required due to differences in protocols and secondary/substrate sensitivity.

Immunogen

A portion of amino acids 216-244 from the human protein was used as the immunogen for this Integrin beta 5 antibody.

Storage

Aliquot the Integrin beta 5 antibody and store frozen at -20oC or colder. Avoid repeated freeze-thaw cycles.