

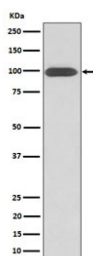
Integrin beta 3 Antibody / ITGB3 [clone 29I49] (RQ8655)

| Catalog No. | Formulation | Size |
|-------------|--|--------|
| RQ8655 | Antibody in PBS with 0.02% sodium azide, 50% glycerol and 0.4-0.5mg/ml BSA | 100 ul |

Recombinant **RABBIT MONOCLONAL**

[Bulk quote request](#)

| | |
|--------------------|---|
| Availability | 1-3 days |
| Species Reactivity | Human |
| Format | Purified |
| Host | Rabbit |
| Clonality | Recombinant Rabbit Monoclonal |
| Isotype | Rabbit IgG |
| Clone Name | 29I49 |
| Purity | Affinity chromatography |
| UniProt | P05106 |
| Applications | Western Blot : 1:500-1:2000 |
| Limitations | This Integrin beta 3 antibody is available for research use only. |



Western blot testing of human U-87 MG cell lysate with Integrin beta 3 antibody. Predicted molecular weight ~88 kDa but may be observed at higher molecular weights due to glycosylation.

Description

The ITGB3 protein product is the integrin beta chain beta 3. Integrins are integral cell-surface proteins composed of an alpha chain and a beta chain. A given chain may combine with multiple partners resulting in different integrins. Integrin beta 3 is found along with the alpha IIb chain in platelets. Integrins are known to participate in cell adhesion as well as cell-surface-mediated signaling. [Wiki]

Application Notes

Optimal dilution of the Integrin beta 3 antibody should be determined by the researcher.

Immunogen

A synthetic peptide specific to human Integrin beta 3 protein was used as the immunogen for the Integrin beta 3 Antibody.

Storage

Store the Integrin beta 3 antibody at -20oC.