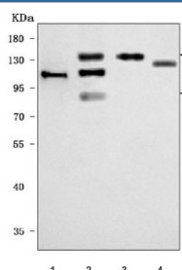


Integrin beta 1 Antibody / ITGB1 / CD29 (RQ8070)

Catalog No.	Formulation	Size
RQ8070	0.5mg/ml if reconstituted with 0.2ml sterile DI water	100 ug

Bulk quote request

Availability	1-3 business days
Species Reactivity	Human, Rat
Format	Antigen affinity purified
Clonality	Polyclonal (rabbit origin)
Isotype	Rabbit IgG
Purity	Antigen affinity purified
Buffer	Lyophilized from 1X PBS with 2% Trehalose
UniProt	P05556
Applications	Western Blot : 0.5-1ug/ml Direct ELISA : 0.1-0.5ug/ml
Limitations	This Integrin beta 1 antibody is available for research use only.



Western blot testing of 1) human HT-1080, 2) human HeLa, 3) human A431 and 4) rat C6 cell lysate with Integrin beta 1 antibody. Expected molecular weight: 88~150 kDa depending on the level of glycosylation.

Description

Integrin beta-1, also known as CD29, is a protein that in humans is encoded by the ITGB1 gene. CD29 is an integrin unit associated with very late antigen receptors. It is known to conjoin with alpha-3 subunit to create alpha3beta1 complex that reacts to such molecules as netrin-1 and reelin. This gene contains a beta subunit that appears to be analogous to band-3 of integrin. It is mapped to 10p11.22. It is found that FER mediates crosstalk between CDH2 and CD29. Integrin family members are membrane receptors involved in cell adhesion and recognition in a variety of processes including embryogenesis, hemostasis, tissue repair, immune response and metastatic diffusion of tumor cells. The protein encoded by this gene is a beta subunit.

Application Notes

Optimal dilution of the Integrin beta 1 antibody should be determined by the researcher.

Immunogen

E. coli-derived recombinant human protein (amino acids G572-E693) was used as the immunogen for the Integrin beta 1 antibody.

Storage

After reconstitution, the Integrin beta 1 antibody can be stored for up to one month at 4oC. For long-term, aliquot and store at -20oC. Avoid repeated freezing and thawing.