

Integrin beta 1 Antibody / ITGB1 / CD29 (R31512)

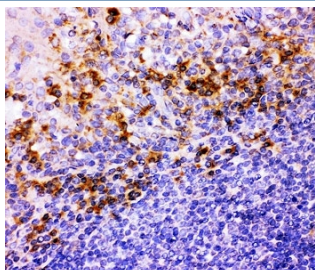
| Catalog No. | Formulation | Size |
|-------------|---|--------|
| R31512 | 0.5mg/ml if reconstituted with 0.2ml sterile DI water | 100 ug |

Bulk quote request

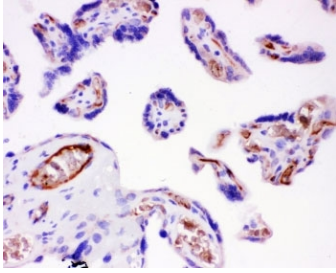
| | |
|---------------------------|---|
| Availability | 1-3 business days |
| Species Reactivity | Human |
| Format | Antigen affinity purified |
| Host | Rabbit |
| Clonality | Polyclonal (rabbit origin) |
| Isotype | Rabbit IgG |
| Purity | Antigen affinity |
| Buffer | Lyophilized from 1X PBS with 2.5% BSA and 0.025% sodium azide |
| Gene ID | 3688 |
| Localization | Cell membrane, cytoplasm |
| Applications | Western Blot : 0.5-1ug/ml IHC (FFPE) : 0.5-1ug/ml |
| Limitations | This Integrin beta 1 antibody is available for research use only. |



Western blot testing of Integrin beta 1 antibody and HeLa lysate; Predicted molecular weight: 88/130~150 kDa (unmodified/glycosylated).



IHC-P: Integrin beta 1 antibody testing of human tonsil tissue



IHC-P: Integrin beta 1 antibody testing of human placenta tissue

Description

Integrin beta-1, also known as CD29, is a protein that in humans is encoded by the ITGB1 gene. It is an integrin unit associated with very late antigen receptors. It is known to conjoin with the alpha-3 subunit to create alpha3beta1 complex that reacts to such molecules as netrin-1 and reelin. Integrin family members are membrane receptors involved in cell adhesion and recognition in a variety of processes including embryogenesis, hemostasis, tissue repair, immune response and metastatic diffusion of tumor cells. The protein encoded by this gene is a beta subunit.

Application Notes

The stated application concentrations are suggested starting amounts. Titration of the Integrin beta 1 antibody may be required due to differences in protocols and secondary/substrate sensitivity.

Immunogen

Human partial recombinant protein (AA 527-728) was used as the immunogen for this Integrin beta 1 antibody.

Storage

After reconstitution, the Integrin beta 1 antibody can be stored for up to one month at 4°C. For long-term, aliquot and store at -20°C. Avoid repeated freezing and thawing.