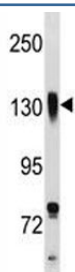


Integrin beta 1 Antibody / ITGB1 / CD29 (F47197)

Catalog No.	Formulation	Size
F47197-0.4ML	In 1X PBS, pH 7.4, with 0.09% sodium azide	0.4 ml
F47197-0.08ML	In 1X PBS, pH 7.4, with 0.09% sodium azide	0.08 ml

[Bulk quote request](#)

Availability	1-3 business days
Species Reactivity	Human
Predicted Reactivity	Mouse, Rat, Bovine, Pig, Chicken, Xenopus
Format	Antigen affinity purified
Host	Rabbit
Clonality	Polyclonal (rabbit origin)
Isotype	Rabbit Ig
Purity	Antigen affinity
UniProt	P05556
Applications	Western Blot : 1:1000
Limitations	This Integrin beta 1 antibody is available for research use only.



Integrin beta 1 antibody western blot analysis in NCI-H292 lysate. Predicted molecular weight: 88/130~150 kDa (unmodified/glycosylated).

Description

Integrins are heterodimeric proteins made up of alpha and beta subunits. At least 18 alpha and 8 beta subunits have been described in mammals. Integrin family members are membrane receptors involved in cell adhesion and recognition in a variety of processes including embryogenesis, hemostasis, tissue repair, immune response and metastatic diffusion of tumor cells. This gene encodes a beta subunit. Multiple alternatively spliced transcript variants which encode different protein isoforms have been found for this gene.

Application Notes

Titration of the Integrin beta 1 antibody may be required due to differences in protocols and secondary/substrate sensitivity.

Immunogen

A portion of amino acids 759-785 from the human protein was used as the immunogen for this Integrin beta 1 antibody.

Storage

Aliquot the Integrin beta 1 antibody and store frozen at -20oC or colder. Avoid repeated freeze-thaw cycles.