

## Integrin beta 1 Antibody / ITGB1 / CD29 [clone 1084CT17.4.1] (F52411)

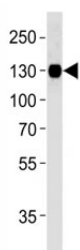
Catalog No.	Formulation	Size
F52411-0.4ML	In 1X PBS, pH 7.4, with 0.09% sodium azide	0.4 ml
F52411-0.08ML	In 1X PBS, pH 7.4, with 0.09% sodium azide	0.08 ml



Citations (1)

[Bulk quote request](#)

Availability	1-3 business days
Species Reactivity	Human
Format	Purified
Host	Mouse
Clonality	Monoclonal (mouse origin)
Isotype	Mouse IgG1
Clone Name	1084CT17.4.1
Purity	Purified
UniProt	P05556
Applications	Western Blot : 1:1000
Limitations	This Integrin beta 1 antibody is available for research use only.



Integrin beta 1 antibody western blot analysis in U87-MG lysate. Predicted molecular weight: 88/130~150 kDa (unmodified/glycosylated).

## Description

Integrin family members are membrane receptors involved in cell adhesion and recognition in a variety of processes including embryogenesis, hemostasis, tissue repair, immune response and metastatic diffusion of tumor cells. Integrins link the actin cytoskeleton with the extracellular matrix and they transmit signals bidirectionally between the extracellular matrix and cytoplasmic domains. Beta-integrins are primarily responsible for targeting integrin dimers to the appropriate subcellular locations, which in adhesive cells is mainly focal adhesions. Integrin beta-1 mutants lose the ability to target to

sites of focal adhesions. [Wiki]

## Application Notes

The stated application concentrations are suggested starting amounts. Titration of the Integrin beta 1 antibody may be required due to differences in protocols and secondary/substrate sensitivity.

## Immunogen

Purified His-tagged protein was used to produced this monoclonal Integrin beta 1 antibody.

## Storage

Store at 4oC for up to one month. For long term, aliquot the Integrin beta 1 antibody and store frozen at -20oC or colder. Avoid repeated freeze-thaw cycles.