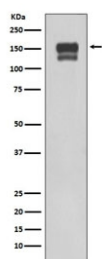


## Integrin beta 1 Antibody [clone AGO-9] (RQ5127)

Catalog No.	Formulation	Size
RQ5127	Antibody in PBS with 0.02% sodium azide, 50% glycerol and 0.4-0.5mg/ml BSA	100 ul

[Bulk quote request](#)

Availability	1-2 weeks
Species Reactivity	Human
Format	Purified
Host	Rabbit
Clonality	Rabbit Monoclonal
Isotype	Rabbit IgG
Clone Name	AGO-9
Purity	Affinity purified
UniProt	P05556
Applications	Western Blot : 1:500-1:2000
Limitations	This Integrin beta 1 antibody is available for research use only.



Western blot testing of human 293T cell lysate with Integrin beta 1 antibody. Expected molecular weight: 88~150 kDa depending on the level of glycosylation.

## Description

Integrins are heterodimeric proteins made up of alpha and beta subunits. At least 18 alpha and 8 beta subunits have been described in mammals. Integrin family members are membrane receptors involved in cell adhesion and recognition in a variety of processes including embryogenesis, hemostasis, tissue repair, immune response and metastatic diffusion of tumor cells. This gene encodes a beta subunit. [RefSeq]

## Application Notes

Optimal dilution of the Integrin beta 1 antibody should be determined by the researcher.

## Immunogen

A synthetic peptide specific to human Integrin beta 1 / ITGB1 was used as the immunogen for the Integrin beta 1 antibody.

## Storage

Store the Integrin beta 1 antibody at -20oC.