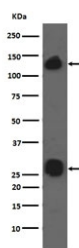


## Integrin alpha V Antibody / ITGAV / Vitronectin Receptor [clone CCE-9] (RQ5163)

Catalog No.	Formulation	Size
RQ5163	Antibody in PBS with 0.02% sodium azide, 50% glycerol and 0.4-0.5mg/ml BSA	100 ul

[Bulk quote request](#)

<b>Availability</b>	1-2 weeks
<b>Species Reactivity</b>	Human
<b>Format</b>	Purified
<b>Host</b>	Rabbit
<b>Clonality</b>	Rabbit Monoclonal
<b>Isotype</b>	Rabbit IgG
<b>Clone Name</b>	CCE-9
<b>Purity</b>	Affinity purified
<b>UniProt</b>	P06756
<b>Applications</b>	Western Blot : 1:1000-1:2000
<b>Limitations</b>	This Integrin alpha V antibody is available for research use only.



Western blot testing of human A549 cell lysate with Integrin alpha V antibody. Expected molecular weight: 116-150 kDa.

### Description

The product of this gene belongs to the integrin alpha chain family. Integrins are heterodimeric integral membrane proteins composed of an alpha subunit and a beta subunit that function in cell surface adhesion and signaling. The encoded preproprotein is proteolytically processed to generate light and heavy chains that comprise the alpha V subunit. This subunit associates with beta 1, beta 3, beta 5, beta 6 and beta 8 subunits. The heterodimer consisting of alpha V and beta 3 subunits is also known as the vitronectin receptor. This integrin may regulate angiogenesis and cancer

progression. Alternative splicing results in multiple transcript variants. Note that the integrin alpha 5 and integrin alpha V subunits are encoded by distinct genes. [RefSeq]

## Application Notes

Optimal dilution of the Integrin alpha V antibody should be determined by the researcher.

## Immunogen

A synthetic peptide specific to human Integrin alpha V / ITGAV was used as the immunogen for the Integrin alpha V antibody.

## Storage

Store the Integrin alpha V antibody at -20oC.