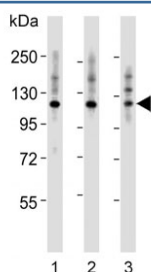


Integrin alpha 7 Antibody / ITGA7 (F54396)

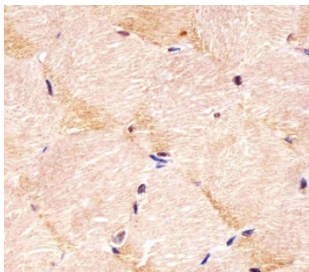
Catalog No.	Formulation	Size
F54396-0.4ML	In 1X PBS, pH 7.4, with 0.09% sodium azide	0.4 ml
F54396-0.08ML	In 1X PBS, pH 7.4, with 0.09% sodium azide	0.08 ml

[Bulk quote request](#)

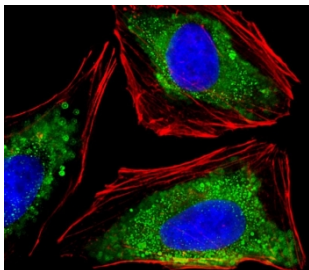
Availability	1-3 business days
Species Reactivity	Human
Format	Purified
Host	Rabbit
Clonality	Polyclonal (rabbit origin)
Isotype	Rabbit Ig
Purity	Antigen affinity purified
UniProt	Q13683
Applications	Western Blot : 1:500-1:2000 Flow Cytometry : 1:25 (1x10 ⁶ cells) Immunohistochemistry (FFPE) : 1:25 Immunofluorescence : 1:25
Limitations	This Integrin alpha 7 antibody is available for research use only.



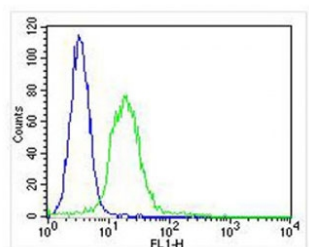
Western blot testing of human 1) HeLa, 2) A431 and 3) Jurkat cell lysate with Integrin alpha 7 antibody. Predicted molecular weight ~129 kDa.



IHC testing of FFPE human skeletal muscle tissue with Integrin alpha 7 antibody. HIER: steam section in pH6 citrate buffer for 20 min and allow to cool prior to staining.



Immunofluorescent staining of fixed and permeabilized human HeLa cells with Integrin alpha 7 antibody (green), DAPI nuclear stain (blue) and anti-Actin (red).



Flow cytometry testing of fixed and permeabilized human U-2 OS cells with Integrin alpha 7 antibody; Blue=isotype control, Green= Integrin alpha 7 antibody.

Description

Integrin alpha-7/beta-1 is the primary laminin receptor on skeletal myoblasts and adult myofibers. During myogenic differentiation, it may induce changes in the shape and mobility of myoblasts, and facilitate their localization at laminin-rich sites of secondary fiber formation. It is involved in the maintenance of the myofibers cytoarchitecture as well as for their anchorage, viability and functional integrity. Isoform Alpha-7X2B and isoform Alpha-7X1B promote myoblast migration on laminin 1 and laminin 2/4, but isoform Alpha-7X1B is less active on laminin 1 (In vitro). Acts as Schwann cell receptor for laminin-2. Acts as a receptor of COMP and mediates its effect on vascular smooth muscle cells (VSMCs) maturation (By similarity). Required to promote contractile phenotype acquisition in differentiated airway smooth muscle (ASM) cells.

Application Notes

The stated application concentrations are suggested starting points. Titration of the Integrin alpha 7 antibody may be required due to differences in protocols and secondary/substrate sensitivity.

Immunogen

A portion of amino acids 247-279 from the human protein was used as the immunogen for the Integrin alpha 7 antibody.

Storage

Aliquot the Integrin alpha 7 antibody and store frozen at -20oC or colder. Avoid repeated freeze-thaw cycles.

