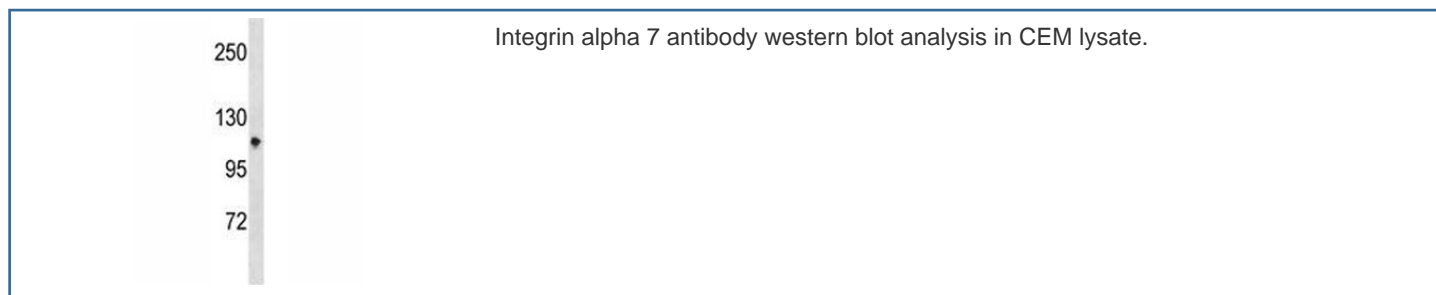


Integrin alpha 7 Antibody (F46857)

Catalog No.	Formulation	Size
F46857-0.4ML	In 1X PBS, pH 7.4, with 0.09% sodium azide	0.4 ml
F46857-0.08ML	In 1X PBS, pH 7.4, with 0.09% sodium azide	0.08 ml

[Bulk quote request](#)

Availability	1-3 business days
Species Reactivity	Human
Predicted Reactivity	Mouse
Format	Antigen affinity purified
Clonality	Polyclonal (rabbit origin)
Isotype	Rabbit Ig
Purity	Antigen affinity
UniProt	Q13683
Applications	Western Blot : 1:1000
Limitations	This Integrin alpha 7 antibody is available for research use only.



Description

The protein encoded by this gene belongs to the integrin alpha chain family. Integrins are heterodimeric integral membrane proteins composed of an alpha chain and a beta chain. They mediate a wide spectrum of cell-cell and cell-matrix interactions, and thus play a role in cell migration, morphologic development, differentiation, and metastasis. This protein functions as a receptor for the basement membrane protein laminin-1. It is mainly expressed in skeletal and cardiac muscles and may be involved in differentiation and migration processes during myogenesis. Defects in this gene are associated with congenital myopathy. Alternatively spliced transcript variants encoding different isoforms have been noted for this gene.

Application Notes

Titration of the Integrin alpha 7 antibody may be required due to differences in protocols and secondary/substrate sensitivity.

Immunogen

A portion of amino acids 229-257 from the human protein was used as the immunogen for this Integrin alpha 7 antibody.

Storage

Aliquot the Integrin alpha 7 antibody and store frozen at -20oC or colder. Avoid repeated freeze-thaw cycles.