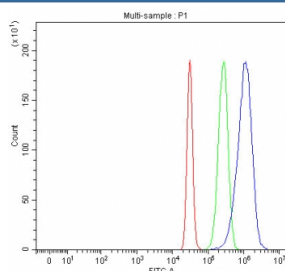


Integrin alpha 6 Antibody / ITGA6 (RQ5304)

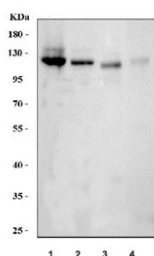
Catalog No.	Formulation	Size
RQ5304	0.5mg/ml if reconstituted with 0.2ml sterile DI water	100 ug

Bulk quote request

Availability	1-3 business days
Species Reactivity	Human, Mouse, Rat
Format	Antigen affinity purified
Clonality	Polyclonal (rabbit origin)
Isotype	Rabbit IgG
Purity	Affinity purified
Buffer	Lyophilized from 1X PBS with 2% Trehalose
UniProt	P23229
Applications	Western Blot : 0.5-1ug/ml Flow Cytometry : 1-3ug/million cells Direct ELISA : 0.1-0.5ug/ml
Limitations	This Integrin alpha 6 antibody is available for research use only.



Flow cytometry testing of fixed and permeabilized human HepG2 cells with Integrin alpha 6 antibody at 1ug/million cells (blocked with goat sera); Red=cells alone, Green=isotype control, Blue= Integrin alpha 6 antibody.



Western blot testing 1) human A431, 2) human A549, 3) rat kidney and 4) mouse kidney tissue lysate with Integrin alpha 6 antibody. Predicted molecular weight ~127 kDa.

Description

Integrin alpha-6, also called VLA-6 or ITGA6B is a protein that in humans is encoded by the ITGA6 gene. This gene is mapped to 2q31.1. The ITGA6 protein product is the integrin alpha chain alpha 6. Integrins are integral cell-surface proteins composed of an alpha chain and a beta chain. A given chain may combine with multiple partners resulting in different integrins. For example, alpha 6 may combine with beta 4 in the integrin referred to as TSP180, or with beta 1 in the integrin VLA-6. Integrins are known to participate in cell adhesion as well as cell-surface mediated signalling. Integrin alpha-6/beta-1 is a receptor for laminin on platelets. Integrin alpha-6/beta-4 is a receptor for laminin in epithelial cells and it plays a critical structural role in the hemidesmosome.

Application Notes

Optimal dilution of the Integrin alpha 6 antibody should be determined by the researcher.

Immunogen

Amino acids Q189-K917 from the human protein were used as the immunogen for the Integrin alpha 6 antibody.

Storage

Store the Integrin alpha 6 antibody at -20oC.