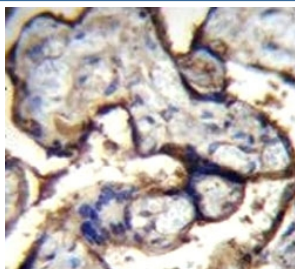


Integrin alpha 5 Antibody (F41992)

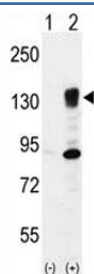
Catalog No.	Formulation	Size
F41992-0.4ML	In 1X PBS, pH 7.4, with 0.09% sodium azide	0.4 ml
F41992-0.08ML	In 1X PBS, pH 7.4, with 0.09% sodium azide	0.08 ml

[Bulk quote request](#)

Availability	1-3 business days
Species Reactivity	Human
Predicted Reactivity	Mouse
Format	Antigen affinity purified
Host	Rabbit
Clonality	Polyclonal (rabbit origin)
Isotype	Rabbit Ig
Purity	Antigen affinity
UniProt	P08648
Applications	Western Blot : 1:1000 IHC (Paraffin) : 1:10-1:50
Limitations	This Integrin alpha 5 antibody is available for research use only.



Integrin alpha 5 antibody immunohistochemistry analysis in formalin fixed and paraffin embedded human placenta tissue



Western blot analysis of Integrin alpha 5 antibody and 293 cell lysate either nontransfected (Lane 1) or transiently transfected (2) with the ITGA5 gene.

Description

The product of this gene belongs to the integrin alpha chain family. Integrins are heterodimeric integral membrane proteins composed of an alpha chain and a beta chain. This gene encodes the integrin alpha 5 chain. Alpha chain 5 undergoes post-translational cleavage in the extracellular domain to yield disulfide-linked light and heavy chains that join with beta 1 to form a fibronectin receptor. In addition to adhesion, integrins are known to participate in cell-surface mediated signalling. [provided by RefSeq].

Application Notes

Titration of the Integrin alpha 5 antibody may be required due to differences in protocols and secondary/substrate sensitivity.

Immunogen

A portion of amino acids 575-602 from the human protein was used as the immunogen for this Integrin alpha 5 antibody.

Storage

Aliquot the Integrin alpha 5 antibody and store frozen at -20oC or colder. Avoid repeated freeze-thaw cycles.