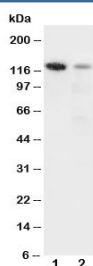


## Integrin alpha 3 Antibody (R30702)

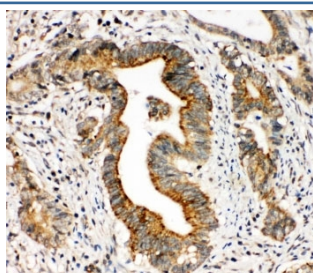
Catalog No.	Formulation	Size
R30702	0.5mg/ml if reconstituted with 0.2ml sterile DI water	100 ug

**Bulk quote request**

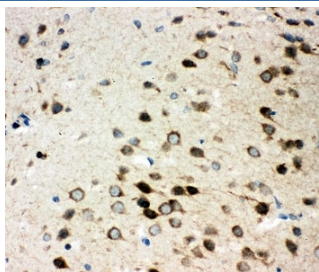
<b>Availability</b>	1-3 business days
<b>Species Reactivity</b>	Human, Mouse, Rat
<b>Format</b>	Antigen affinity purified
<b>Clonality</b>	Polyclonal (rabbit origin)
<b>Isotype</b>	Rabbit IgG
<b>Purity</b>	Antigen affinity
<b>Buffer</b>	Lyophilized from 1X PBS with 2.5% BSA and 0.025% sodium azide/thimerosal
<b>UniProt</b>	P26006
<b>Applications</b>	Western Blot : 0.5-1ug/ml IHC (FFPE) : 0.5-1ug/ml
<b>Limitations</b>	This Integrin alpha 3 antibody is available for research use only.



Western blot testing of Integrin alpha 3 antibody and Lane 1: rat heart; 2: HeLa cell lysate. Expected molecular weight: 119-150 kDa depending on glycosylation level.



IHC-P: Integrin alpha 3 antibody testing of human intestinal cancer tissue. HIER: steamed with pH6 citrate buffer.



IHC-P: Integrin alpha 3 antibody testing of rat brain tissue. HIER: steamed with pH6 citrate buffer.

## Description

ITGA3 (Integrin alpha 3), also called CD49C, VLA3 or GAPB3, is a protein that in humans is encoded by the ITGA3 gene. It is an integrin alpha subunit which is also a member of the family of cell surface adhesion molecules. It is mapped to chromosome 17 and its exact cytogenetic location is 17q21.33. ITGA3 makes up half of the alpha3beta1 integrin duplex that plays a role in neural migration and corticogenesis together with beta-1 subunit. A functional link between DAB1 phosphorylation and ITGA3 signaling drives the timely detachment of migrating neurons from radial glial fibers. Expression of the human protein increased the infectivity of virus for Chinese hamster ovary cells. ITGA3 also contains 13 potential N-glycosylation sites, two potential cleavage sites, and the the N-terminal repeating units characteristic of ITGAs.

## Application Notes

The stated application concentrations are suggested starting amounts. Titration of the Integrin alpha 3 antibody may be required due to differences in protocols and secondary/substrate sensitivity.

## Immunogen

An amino acid sequence from the N-terminus of human ITG3A (LFGYSVALHRQTERQQR) was used as the immunogen for this Integrin alpha 3 antibody (100% homologous in human, mouse and rat).

## Storage

After reconstitution, the Integrin alpha 3 antibody can be stored for up to one month at 4oC. For long-term, aliquot and store at -20oC. Avoid repeated freezing and thawing.