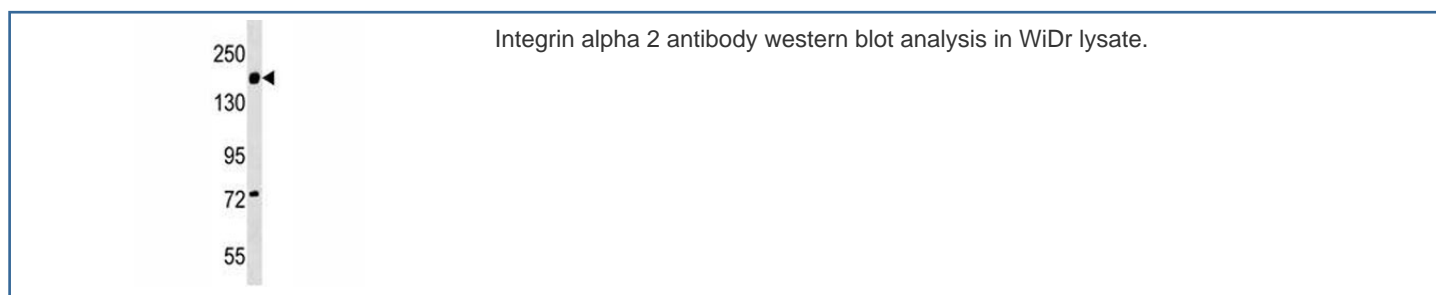
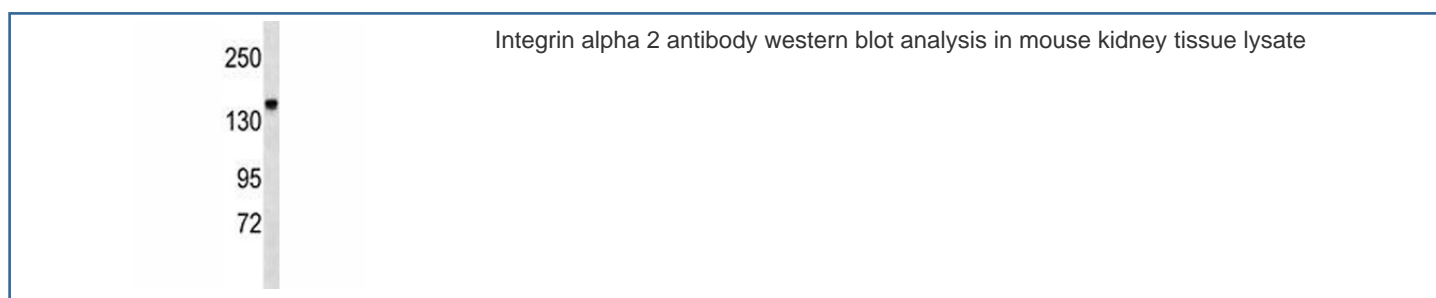


Integrin alpha 2 Antibody (F46003)

Catalog No.	Formulation	Size
F46003-0.4ML	In 1X PBS, pH 7.4, with 0.09% sodium azide	0.4 ml
F46003-0.08ML	In 1X PBS, pH 7.4, with 0.09% sodium azide	0.08 ml

[Bulk quote request](#)

Availability	1-3 business days
Species Reactivity	Human, Mouse
Format	Antigen affinity purified
Clonality	Polyclonal (rabbit origin)
Isotype	Rabbit Ig
Purity	Antigen affinity
UniProt	P17301
Applications	Western Blot : 1:1000
Limitations	This Integrin alpha 2 antibody is available for research use only.



Description

This gene product belongs to the integrin alpha chain family. Integrins are heterodimeric integral membrane glycoproteins composed of a distinct alpha chain and a common beta chain. They are found on a wide variety of cell types including, T cells, fibroblasts and platelets. Integrins are involved in cell adhesion and also participate in cell-surface mediated signalling. [provided by RefSeq].

Application Notes

Titration of the Integrin alpha 2 antibody may be required due to differences in protocols and secondary/substrate sensitivity.

Immunogen

A portion of amino acids 1152-1180 from the human protein was used as the immunogen for this Integrin alpha 2 antibody.

Storage

Aliquot the Integrin alpha 2 antibody and store frozen at -20oC or colder. Avoid repeated freeze-thaw cycles.